



Micro GC Fusion[®]

EZ IQ and Micro GC Fusion Driver

Installation Guide

PN 074-663-P1B

Trademarks

The trademarks of the products mentioned in this manual are held by the companies that produce them.

Micro GC Fusion® is a registered trademark of INFICON GmbH.

Windows® and Microsoft® are registered trademarks of Microsoft Corporation.

All other brand and product names are trademarks or registered trademarks of their respective companies.

Disclaimer

The information contained in this manual is believed to be accurate and reliable. However, INFICON assumes no responsibility for its use and shall not be liable for any special, incidental, or consequential damages related to the use of this product.

Due to our continuing program of product improvements, specifications are subject to change without notice.

Copyright

©2017 All rights reserved.

Reproduction or adaptation of any part of this document without permission is unlawful.

Table Of Contents

	Cover Page	
	Trademarks	
	Disclaimer	
	Copyright	
Chapter 1	EZ IQ Installation	
1.1	Introduction	1-1
1.2	Computer Minimum Requirements	1-1
1.3	Install EZ IQ	1-2
1.4	EZ IQ Installation Qualification	1-9
Chapter 2	Micro GC Fusion Driver Installation and Configuration	
2.1	Installing Micro GC Fusion Driver for EZ IQ	2-1
2.2	Micro GC Fusion Driver License Activation	2-4
2.3	Configuring EZ IQ for Micro GC Fusion	2-6
Chapter 3	Customer Support	
3.1	How To Contact Customer Support	3-1

Chapter 1

EZ IQ Installation

1.1 Introduction

Micro GC Fusion is compatible with INFICON EZ IQ software (PN G2801-64002). To connect Micro GC Fusion to EZ IQ, the Micro GC Fusion driver for EZ IQ must be installed on the EZ IQ computer and a license for Micro GC Fusion driver on OpenLAB or EZ IQ (PN 952-389-G1) must be obtained from INFICON and installed on Micro GC Fusion.

1.2 Computer Minimum Requirements

The EZ IQ computer must meet the following requirements:

Table 1-1 Computer minimum requirements

Type	Microsoft Operating System	CPU	RAM ¹	Disk Space	Network	Graphics
Minimum Configuration	XP Pro. SP3 with .Net 3.0 or Vista Business SP1 or Windows 7 Pro 32-bit	2 GHz	2 GB	10 GB	See section 1.2.1.	1024 x 768
Recommended Configuration	XP Pro. SP3 with .Net 3.0 or 3.5 SP1 or Vista Business SP1 or Windows 7 Pro 32-bit	Dual core 2 GHz	2 GB	10 GB and >60% free HD space	100 Mbps or higher	1280 x 1024 or higher

¹RAM total available memory for EZ IQ including the operating system, but no other application.

1.2.1 Important Notes

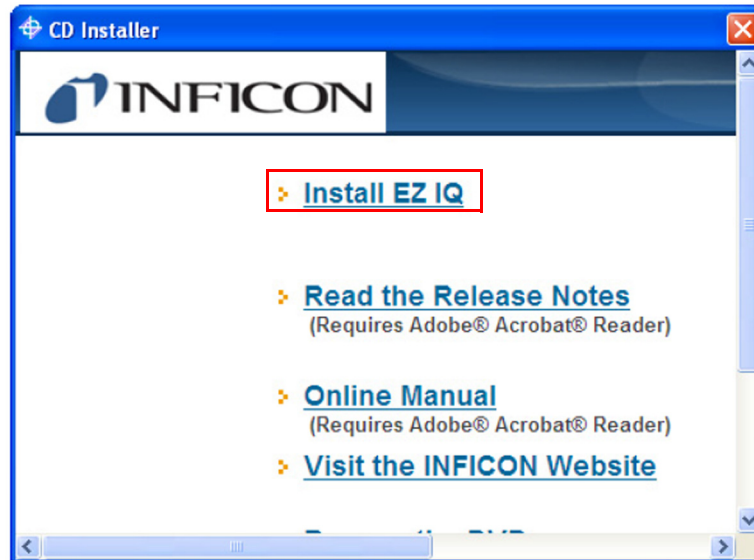
- ◆ Microsoft TCP/IP networking is required for all products. WAN's (wide area networks) are not supported.
- ◆ Disk space requirements should be adjusted based on archival periodicity. INFICON recommends a minimum of one year of the expected disk usage on top of the recommendation of the operating system. For reference, each analysis will generate a data file of ~200 KB.
- ◆ Micro GC Fusion software must be upgraded to version 1.3 or higher.

1.3 Install EZ IQ

To install EZ IQ onto a Windows computer:

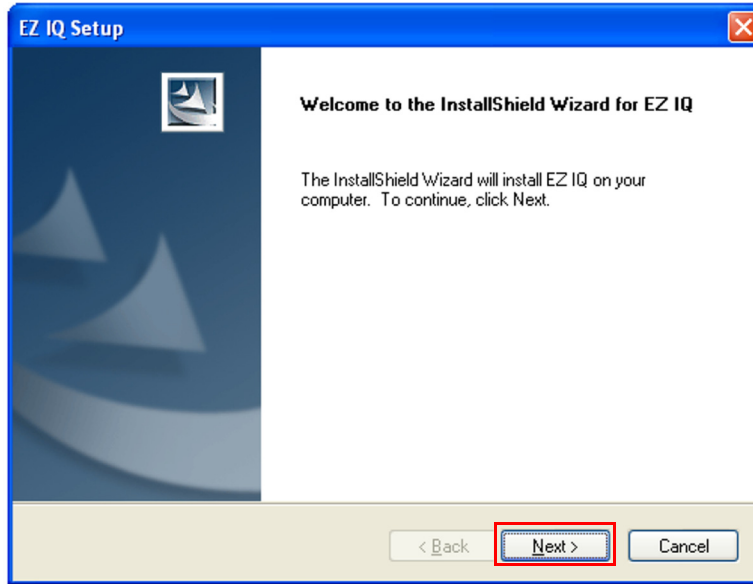
- 1 Insert the EZ IQ Installation CD into the computer CD-ROM drive.
- 2 The **CD Installer** window will display. (See [Figure 1-1](#).) If it does not display, double-click **CDInstaller.exe** under the CD-ROM root drive.
- 3 Click **Install EZ IQ** to start the installation.

Figure 1-1 CD Installer window



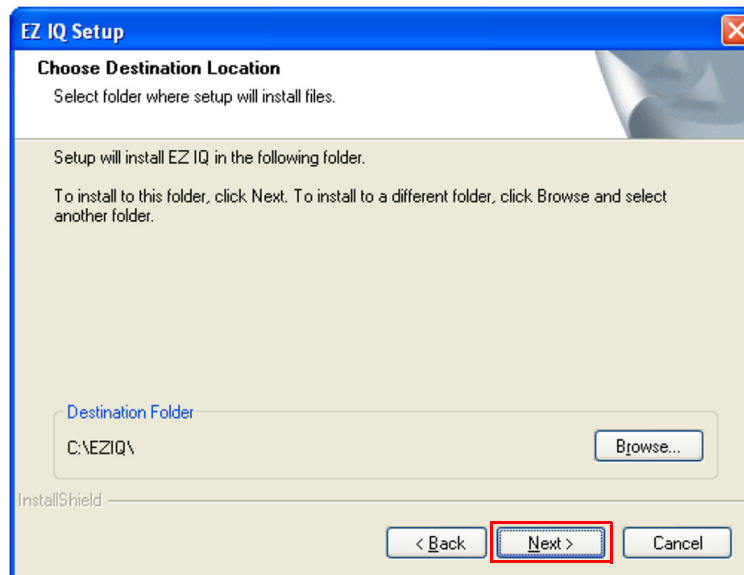
- The **EZ IQ Setup - Welcome to the InstallShield Wizard for EZ IQ** window will display. (See [Figure 1-2](#).) Click **Next>**.

Figure 1-2 EZ IQ Setup - Welcome window



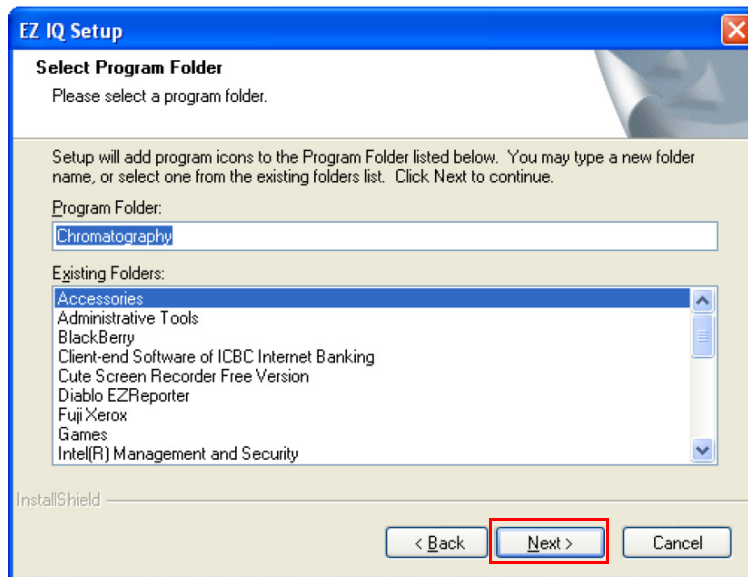
- The **EZ IQ Setup - Choose Destination Location** window will display. (See [Figure 1-3](#).) Choose an EZ IQ software installation destination folder. It is recommended to use the default destination folder **C:\EZIQ**. Click **Next>**.

Figure 1-3 EZ IQ Setup - Choose Destination Location window



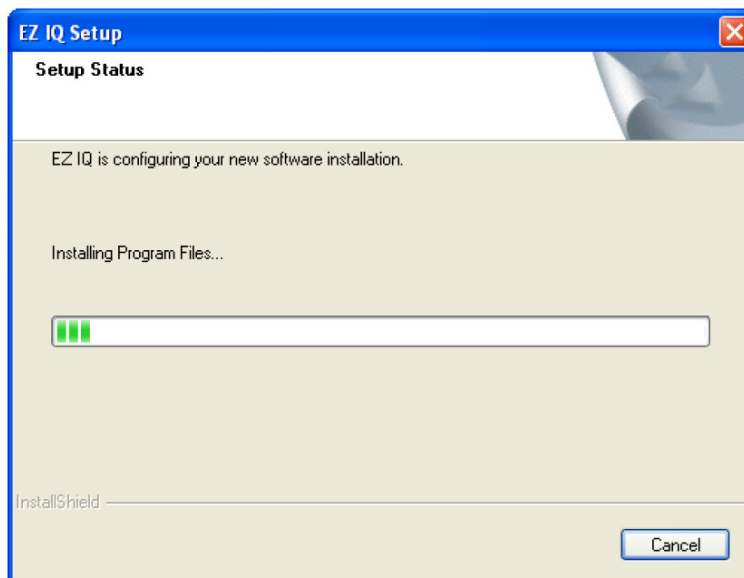
- The **EZ IQ Setup - Select Program Folder** window will display. (See [Figure 1-4](#).) Type in a name for the **Program Folder**. This name will be shown in the **Start >> All Programs** menu. It is recommended to use the default **Chromatography** program folder name. Click **Next>**.

Figure 1-4 EZ IQ Setup - Select Program Folder window



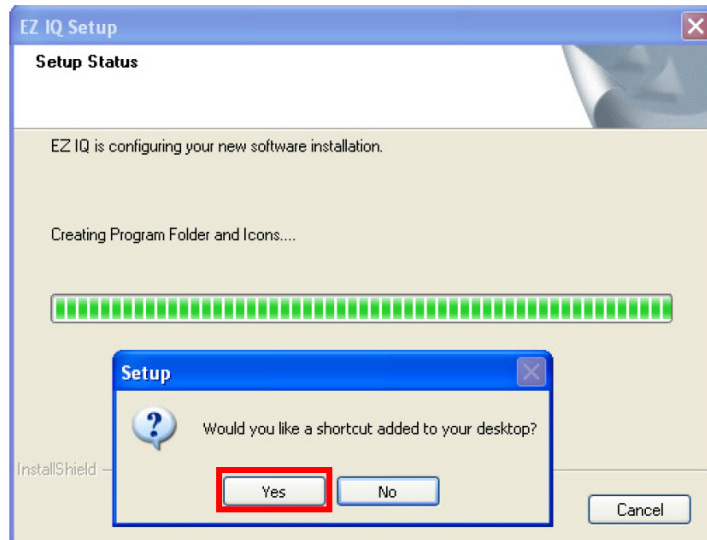
- The **EZ IQ Setup - Setup Status** window will display. (See [Figure 1-5](#).)

Figure 1-5 EZ IQ Setup - Setup Status window



- 8 When prompted, click **Yes** to create an EZ IQ desktop shortcut. (See Figure 1-6.)

Figure 1-6 EZ IQ Setup - Setup Status window and EZ IQ shortcut icon



- 9 Various EZ IQ installation windows will display. Some are shown in [Figure 1-7](#) through [Figure 1-11](#).

Figure 1-7 EZ IQ RUO2 Setup - Setup Status window

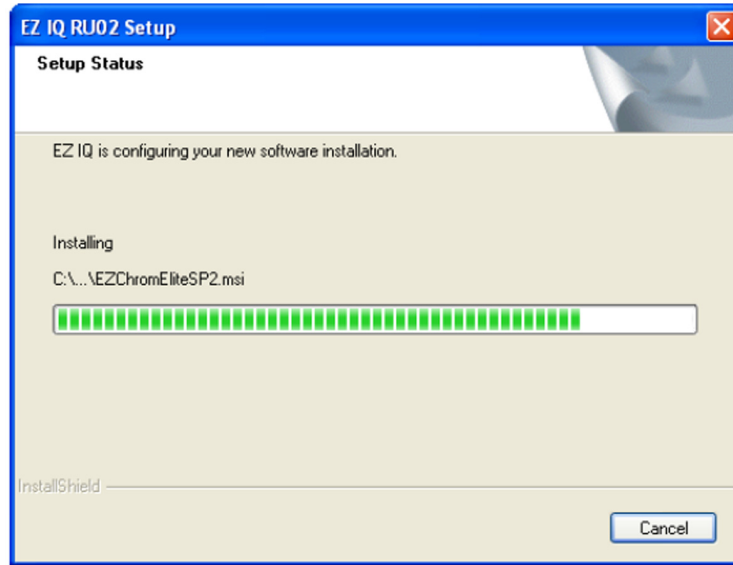


Figure 1-8 EZ IQ 3.3.2 SP2 Setup - Setup Status window

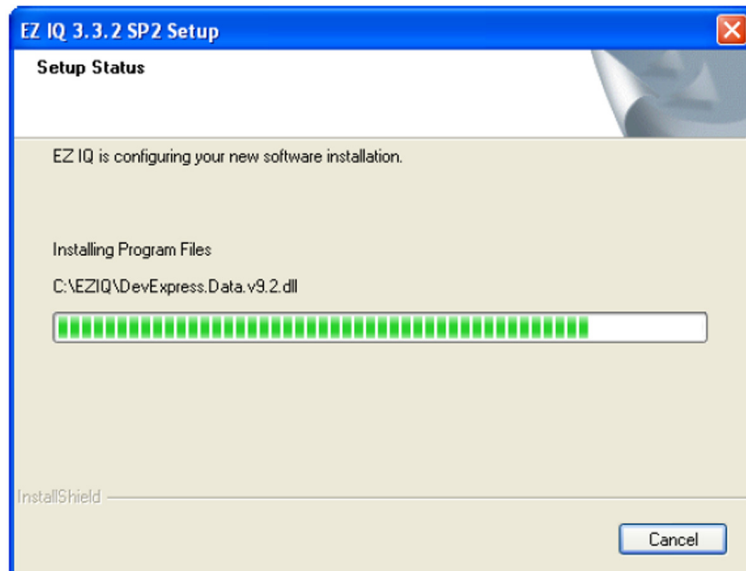


Figure 1-9 EZ IQ Setup - cmd.exe window

```

C:\WINDOWS\system32\cmd.exe

C:\EZIQ>attrib -R /D *.* /s

C:\EZIQ>c:\WINDOWS\Microsoft.NET\Framework\v2.0.50727\regasm /unregister rapidcontrolif.dll /CODEBASE /TLB
Microsoft (R) .NET Framework Assembly Registration Utility 2.0.50727.3053
Copyright (C) Microsoft Corporation 1998-2004. All rights reserved.

Types un-registered successfully
Type library 'C:\EZIQ\rapidcontrolif.tlb' un-registered successfully

C:\EZIQ>c:\WINDOWS\Microsoft.NET\Framework\v2.0.50727\regasm rapidcontrolif.dll /CODEBASE
Microsoft (R) .NET Framework Assembly Registration Utility 2.0.50727.3053
Copyright (C) Microsoft Corporation 1998-2004. All rights reserved.

Types registered successfully

C:\EZIQ>regtypelib -r rapidcontrolif.tlb
Agilent Technologies Typelib Registration Tool (READY_REGTYPELIB_1.1)
Copyright ?Agilent Technologies (2000)
    
```

Figure 1-10 INFICON MicroGC Setup - Setup Status window

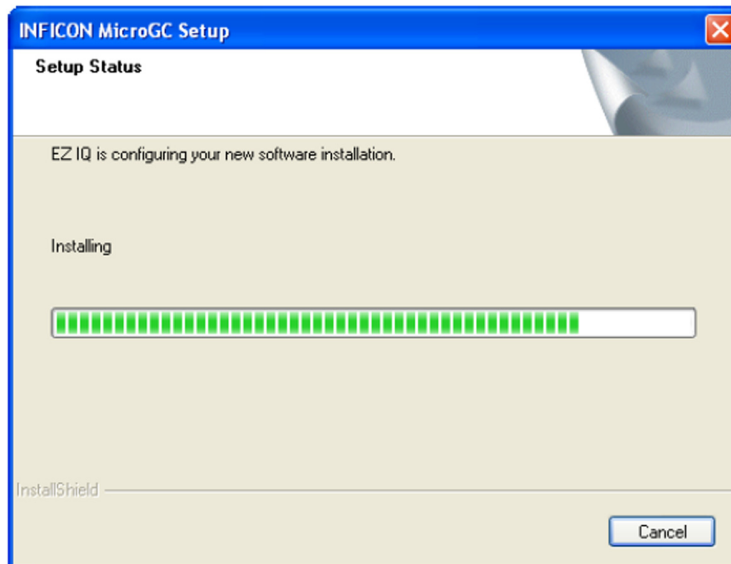
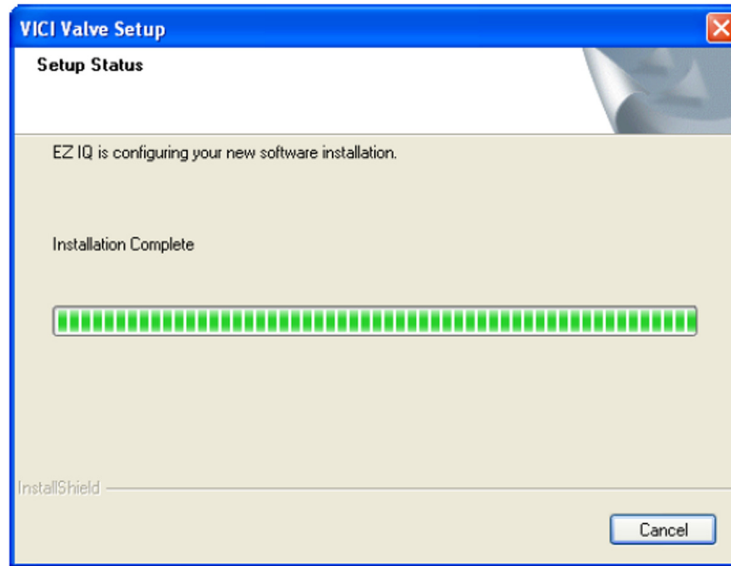
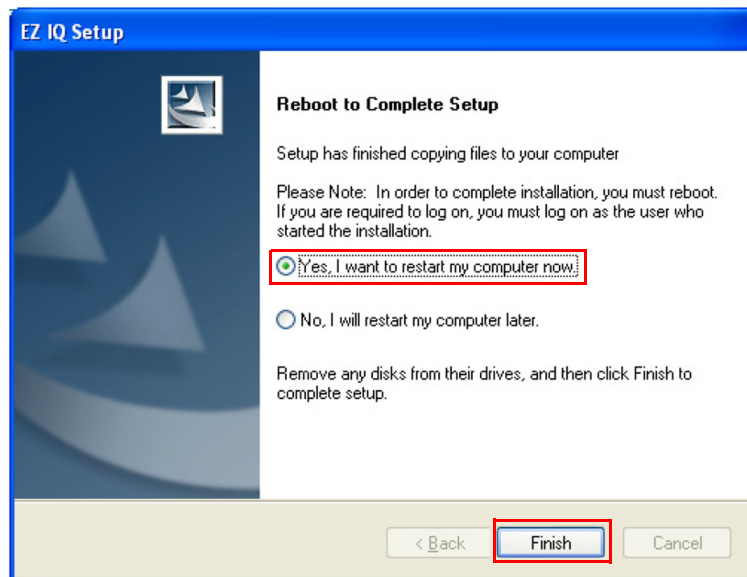


Figure 1-11 VICI Valve Setup - Setup Status window



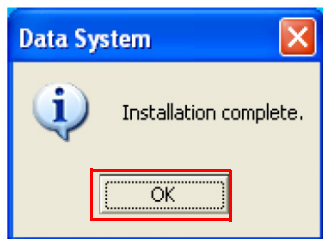
- 10 When the installation is complete, the **EZ IQ Setup - Reboot to Complete Setup** window will display. (See Figure 1-12.) Select **Yes, I want to restart my computer now**. Click **Finish**.

Figure 1-12 EZ IQ Setup - Reboot to Complete Setup window



- 11 Once the computer reboots, the **Data System** window will display. (See Figure 1-13.) Click **OK** to complete the installation.

Figure 1-13 Data System - Installation complete window



1.4 EZ IQ Installation Qualification

EZ IQ provides an installation qualification tool to verify that the software was installed correctly.

- 1 Select **Start >> Chromatography >> Installation Qualification (IQ)**.
- 2 A **Report.TXT** file will display. If the installation was successful, **Installation Qualification Test: PASSED** will appear. (See Figure 1-14.)

Figure 1-14 EZ IQ Installation Qualification Test: PASSED

```

Installation Qualification Report
Jun 02, 2011 07:27 PM

Installation Qualification Test: PASSED

Installed components
-----
EZIQ_3.3.2
VICIValveAddOn_3.3.2
BaseSystem_3.3.2_RU02
BaseSystem_3.3.2_SP2
AgilentGCAddOn_3.3.2_Rev04
BaseSystem_3.3.2_RU04
Update3321041
Update3321043
InficonGC_332
InficonOEMInterface

Superseded components
-----
NONE

VALID Modules                               Size      Checksum  Qualification Source
-----
AcqDUISBase.dll                            184320    0x9D3D22F2  EZIQ_3.3.2
AeEliteAdapter.IFace                        94208     0xDFEDD349  Update3321041
AG68xx.Config.dll                           242688    0xBF9C2C8   AgilentGCAddOn_3.3.2_Rev04
AG68xx.Method.dll                          1160704   0x7DFF21F7  AgilentGCAddOn_3.3.2_Rev04
AG68xx.Status.dll                          142848    0x7FFB9D5B  AgilentGCAddOn_3.3.2_Rev04
AG68xx.Utility.dll                          69632     0xFFEBC0B   AgilentGCAddOn_3.3.2_Rev04
AgColumnB.v3.1.dll                          190976    0xE9E561AE  InficonGC_332
AgCTG1888Drv.exe                           1552492   0xEBBAEA90  AgilentGCAddOn_3.3.2_Rev04
AgGC68XXWrapper.dll                        290816    0xEDFF90A1  AgilentGCAddOn_3.3.2_Rev04
AgGC68XXWrapperUtility.dll                  61440     0xEE3C8636  AgilentGCAddOn_3.3.2_Rev04
AgGC7890A1sME.dll                          265216    0xF3FE7D92  AgilentGCAddOn_3.3.2_Rev04
AgGC7890Drv.dll                             734208    0xF37B3BC7  AgilentGCAddOn_3.3.2_Rev04
    
```

- 3 If the installation was not successful, **Installation Qualification Test: FAILED** will appear. (See [Figure 1-15](#).) Reinstall EZ IQ. If the problem continues, contact INFICON.

Figure 1-15 EZ IQ Installation Qualification Test: FAILED

```

Installation Qualification Report
Feb 24, 2015 01:34 PM

Installation Qualification Test: FAILED

Installed components
-----
EZIQ_3.3.2
InficonOEMInterface
InficonGC_332
BaseSystem_3.3.2_RU02
BaseSystem_3.3.2_SP2
BaseSystem_3.3.2_RU04
Update3321041
Update3321043
VICIValveAddOn_3.3.2
INFICON_Micro_GC_Fusion

Superseded components
-----
NONE

INVALID Modules
Qualification Source                               Size      Checksum
-----
AgGC68XXWrapper.dll                               290816    0xEDFF90A1
InficonGC_332
AgGC68XXWrapperUtility.dll                         61440    0xEE3C8636
InficonGC_332
AxInterop.HPCTUI2801Method.dll                     5632     0xFFFF9AC3
InficonGC_332
Interop.AgRCWrapperIFLib.dll                       40960    0xB6E893E1
InficonGC_332
Interop.HPCT2801drv.dll                             249856    0x1BD82B8F
InficonGC_332
Interop.HPCTSysUI.dll                               12288     0x7FF2C540
InficonGC_332
RapidControlIF.dll                                 98304     0xBEF91F3E
BaseSystem_3.3.2_SP2
RCNetCOMInterop.dll                                81920     0xDEFE6192
BaseSystem_3.3.2_SP2
    
```

Chapter 2

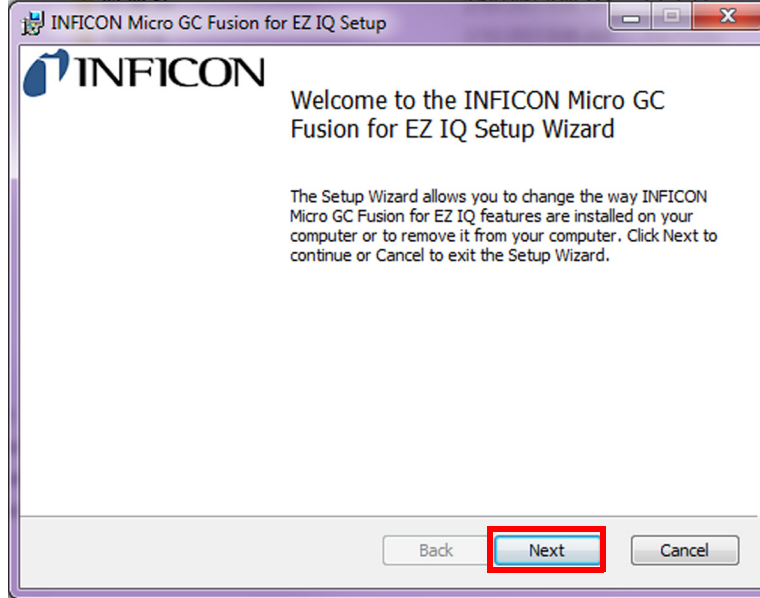
Micro GC Fusion Driver Installation and Configuration

2.1 Installing Micro GC Fusion Driver for EZ IQ

The EZ IQ driver is available for download from <http://www.inficon.com/tabid/244/en-US/default.aspx>.

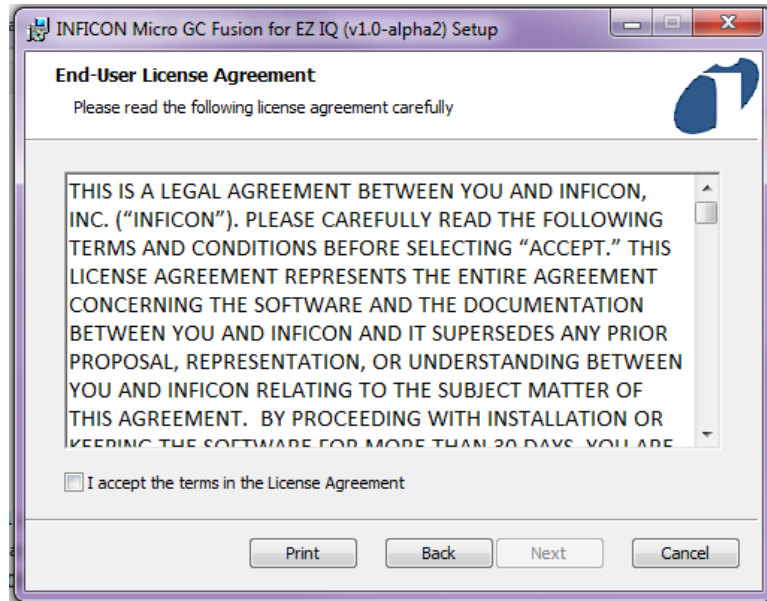
- 1** Download the Micro GC Fusion driver for EZ IQ from under the **Software Downloads** tab (<http://www.inficon.com/tabid/244/en-US/default.aspx>).
 - 1a** Click **Micro GC Fusion Driver for EZ IQ**.
 - 1b** Enter user information and then click **Start Download**.
 - 1c** The file **MicroGCFusion-EZIQ-Driver.Setup** will download.
- 2** Double-click on **MicroGCFusion-EZIQ-Driver.Setup** to start the installation process.
- 3** The **INFICON Micro GC Fusion for EZ IQ Setup** window will display. Click **Next**. (See [Figure 2-1](#).)

Figure 2-1 EZ IQ driver welcome window



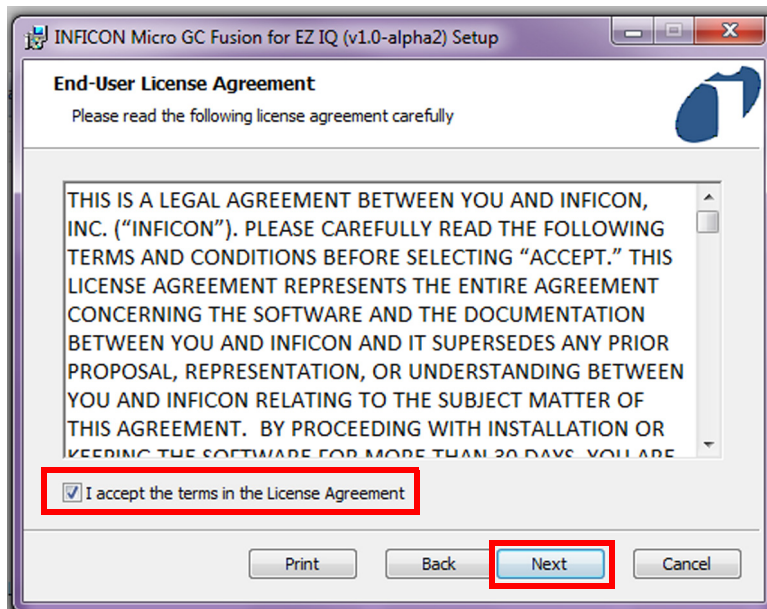
4 The **End-User License Agreement** window will display. (See [Figure 2-2.](#))

Figure 2-2 End-User License Agreement



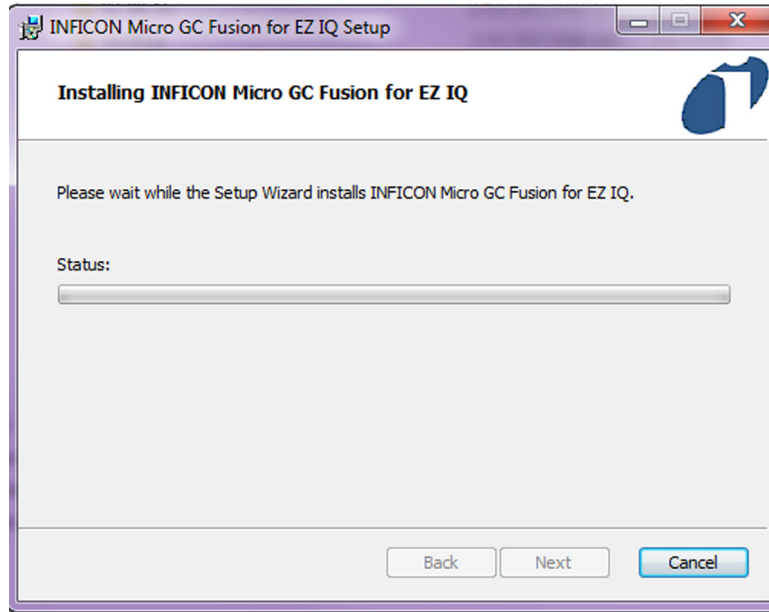
5 If the terms of the **End-User License Agreement** are acceptable, select **I accept the terms in the License Agreement**. Click **Next**. (See [Figure 2-3.](#))

Figure 2-3 Accept the terms in the End-User License Agreement



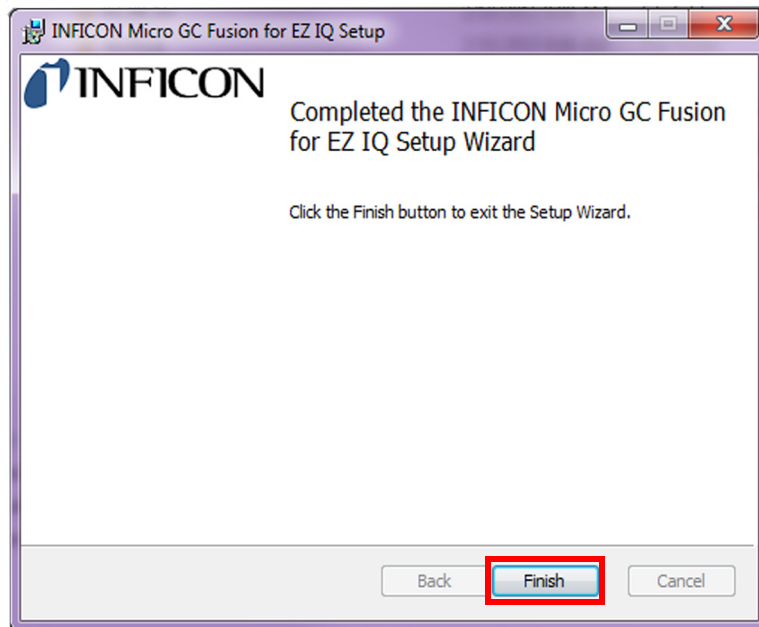
- The driver installation will begin. (See Figure 2-4.)

Figure 2-4 Driver installation



- Once the installation is complete, click **Finish** to exit the setup wizard. (See Figure 2-5.)

Figure 2-5 Click Finish to exit the setup wizard



2.2 Micro GC Fusion Driver License Activation

Perform the following steps to activate Micro GC Fusion access from EZ IQ.

1 Ensure the following materials are readily available:

- ♦ The **License Certificate ID** from the License Certificate for EZ IQ or Open LAB Access (PN 952-389-G1).
- ♦ The serial number of the Micro GC Fusion that will connect to EZ IQ

NOTE: The serial number can be found on the product label on the back of the instrument.

2 On a computer with access to the internet, open a web browser. Type **http://fusionlicense.inficon.com** in the address bar and press enter. Enter the **License Certificate ID** and **Instrument Serial Number**. (See [Figure 2-6](#).)

NOTE: Web browsers including the latest version of Google Chrome, FireFox and Internet Explorer are supported. Refer to 074-594-P1 Micro GC Fusion Operating Manual for support on older web browser versions.

Figure 2-6 License Activation and Download

The screenshot shows a web browser window with the title "INFICON Micro GC Fusion License Manager". The main content area has a blue background and contains the following text:

License Activation and Download
for EZ IQ, OpenLAB CDS, or Modbus

License Certificate ID:

Instrument Serial Number:

Download License

Click the appropriate link for installation instructions:

- [EZ IQ and Micro GC Fusion Driver Installation Guide](#)
- [OpenLab CDS EZChrom Edition Driver Installation Guide](#)
- [Modbus over Ethernet Activation Guide](#)

1.1.0

3 Click **Download License** to download the **openlab-fusion.license** file onto the computer. (Refer to [Figure 2-6](#).)

NOTE: If a different computer was used to download the license file, transfer the **openlab-fusion.license** file to the computer connected to Micro GC Fusion.



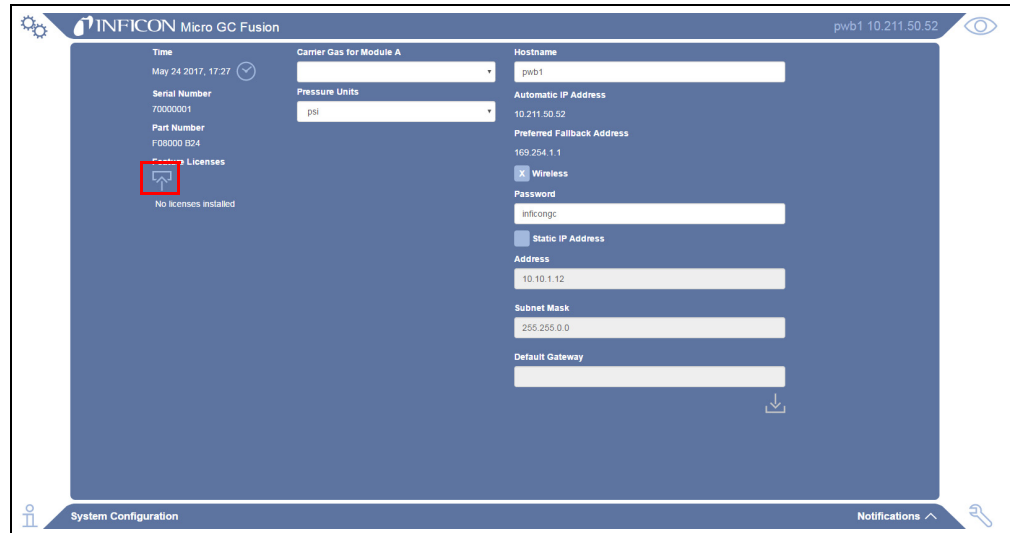
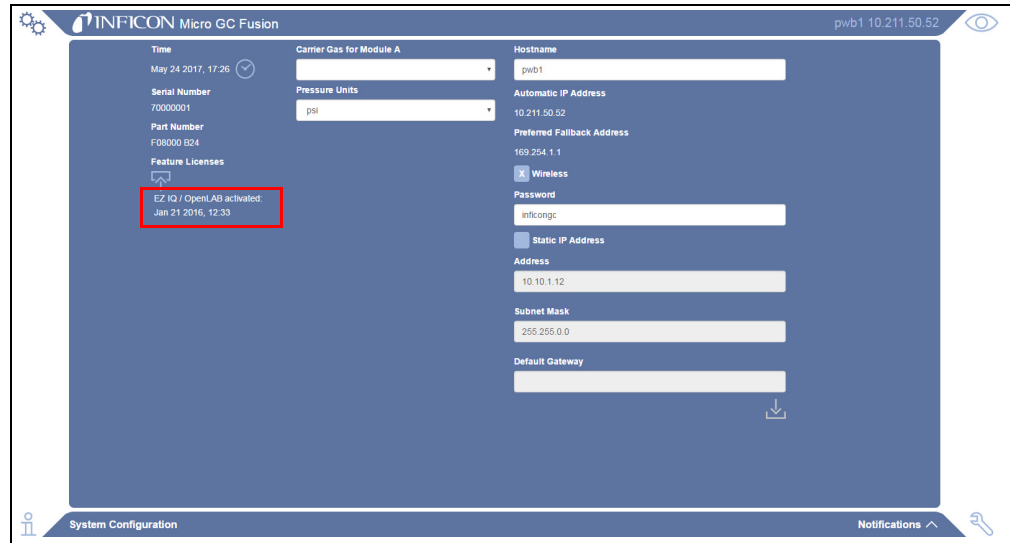
- 4 Complete the license activation by uploading the Micro GC Fusion license file into the Micro GC Fusion via the web-based user interface on the computer.
 - 4a On the computer that is connected to Micro GC Fusion, open a web browser. Type the instrument hostname or IP address of the connected Micro GC Fusion in the address bar and press enter.
 - 4b Click the  icon. Click the **System Administration** button. Click the **System Configuration** button.
 - 4c Click the  icon. (See Figure 2-7.)

Figure 2-7 Upload Micro GC Fusion license file



- 4d Navigate to the folder that contains the **openlab-fusion.license** file. Click **Open** to upload the file.
- 5 Micro GC Fusion is now licensed for EZ IQ access. (See Figure 2-8.)

Figure 2-8 Upload license file is complete



2.3 Configuring EZ IQ for Micro GC Fusion

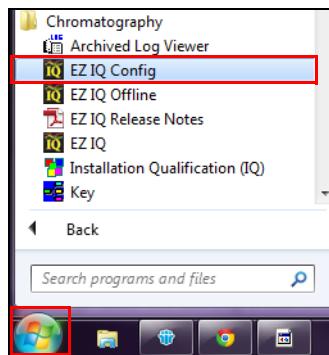
Before configuring EZ IQ for Micro GC Fusion, ensure:

- ♦ EZ IQ was successfully installed
- ♦ Micro GC Fusion Driver for EZ IQ was successfully installed
- ♦ Micro GC Fusion is powered on
- ♦ The computer with EZ IQ installed and Micro GC Fusion are physically connected via an Ethernet cable, either through direct connection or through a LAN network

To connect Micro GC Fusion to the computer with EZ IQ installed:

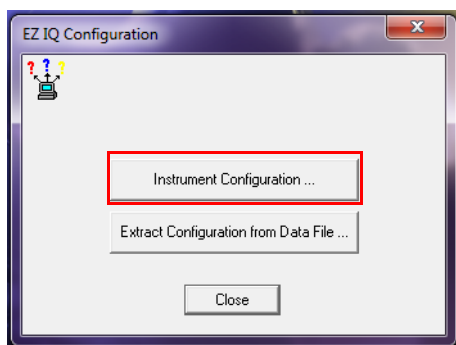
- 1 Select **Start >> All Programs >> Chromatography >> EZ IQ Config**. (See [Figure 2-9](#).)

Figure 2-9 EZ IQ Config



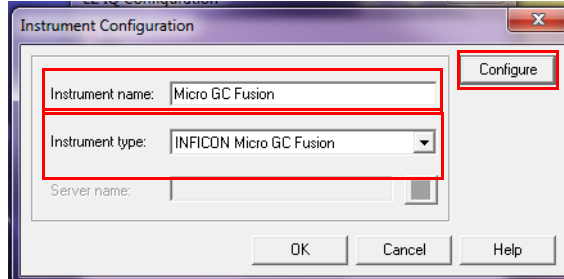
- 2 The **EZ IQ Configuration** window will display. Click **Instrument Configuration...** (See [Figure 2-10](#).)

Figure 2-10 Click Instrument Configuration...



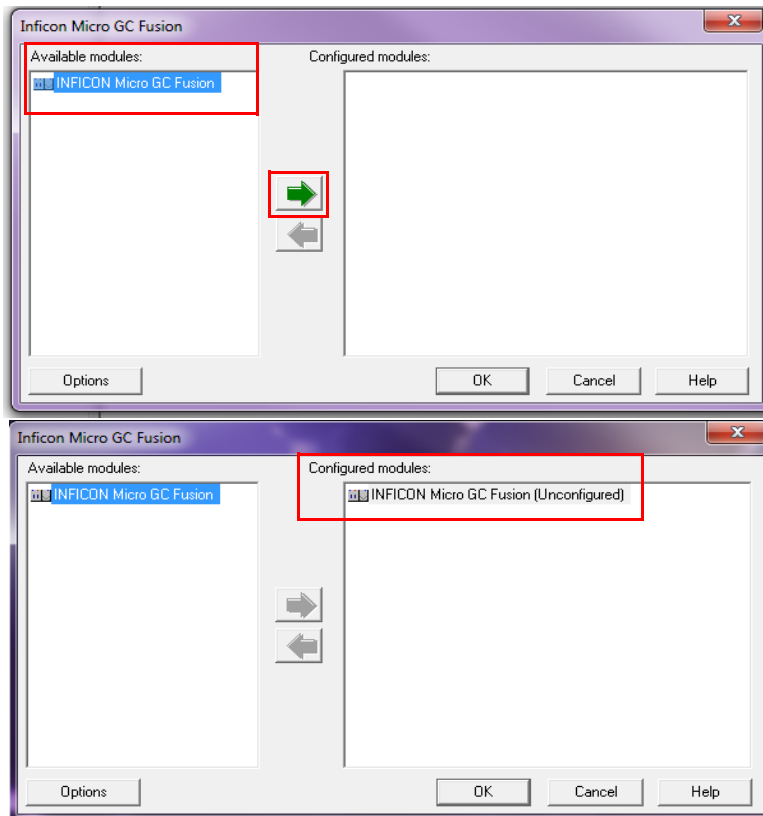
- 3 In the **Instrument Configuration** window, type an **Instrument Name**. From the **Instrument Type** shortcut menu, select **INFICON Micro GC Fusion**. Click **Configure**. (See Figure 2-11.)

Figure 2-11 Instrument Configuration



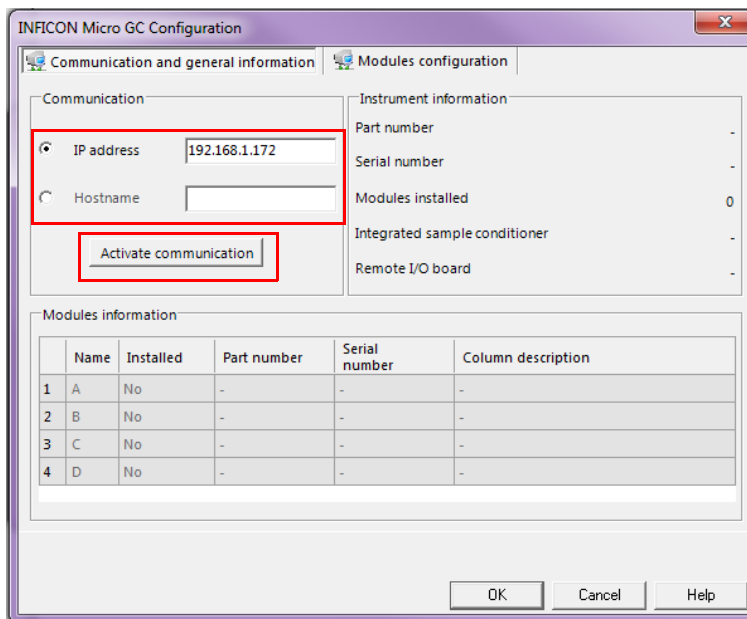
- 4 The **INFICON Micro GC Fusion** configuration window will display. Select the **INFICON Micro GC Fusion** icon. Click the green arrow to move the **INFICON Micro GC Fusion** icon from **Available modules** to **Configured modules**. (See Figure 2-12.)

Figure 2-12 INFICON Micro GC Fusion driver icon, before and after



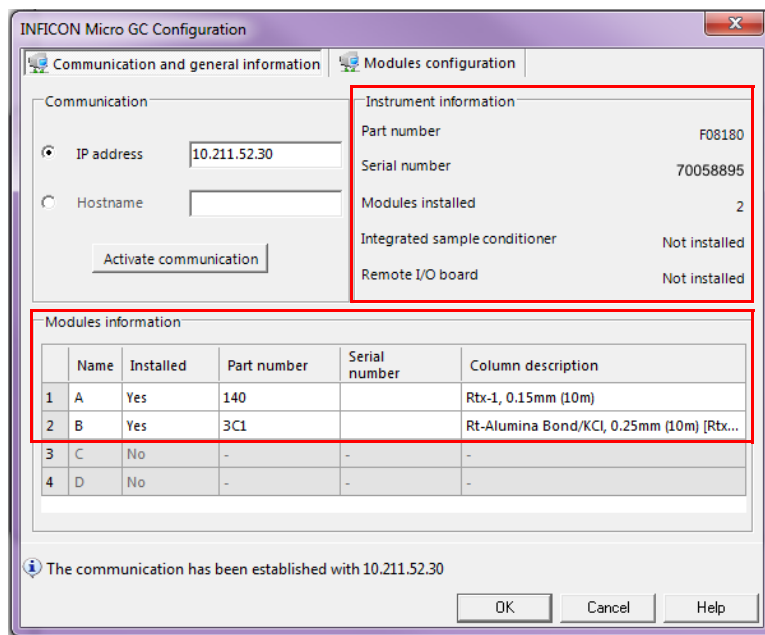
- 5 Double-click on the **INFICON Micro GC Fusion** icon in the **Configured modules** pane to open the **INFICON Micro GC Configuration** window. (See [Figure 2-13.](#))
- 6 Type either the **IP address** or **Hostname** of Micro GC Fusion. Click **Activate Communication**. (See [Figure 2-13.](#))

Figure 2-13 Type Micro GC Fusion IP address or Hostname



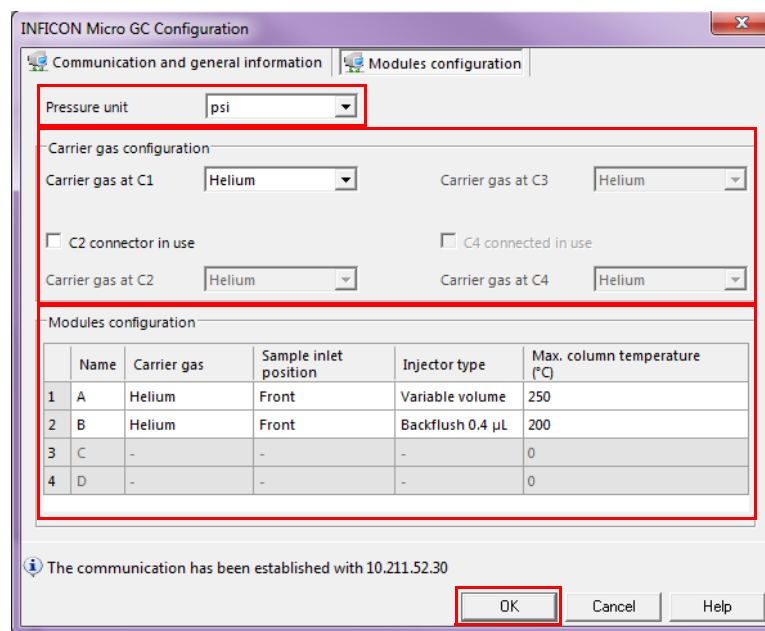
- Once EZ IQ has successfully communicated with Micro GC Fusion, the **Modules information** field will be populated with Micro GC Fusion configuration information. Additional information, such as instrument **Part number** and **Serial number** will be available on the right hand side of the window. (See Figure 2-14.)


Figure 2-14 Micro GC Fusion configuration



- Select the **Modules configuration** tab to view the **Pressure unit**, **Carrier gas configuration**, and additional module information. (See Figure 2-15.)

Figure 2-15 Modules configuration



- 9** Click **OK** to exit the **INFICON Micro GC Configuration** window. (Refer to [Figure 2-15.](#))
- 10** Click **OK** to exit the **INFICON Micro GC Fusion** window.
- 11** Click **OK** to exit the **Instrument Configuration** window.
- 12** Click **Close** to exit the **EZ IQ Configuration** window.
- 13** Click the  icon on the computer to launch EZ IQ.

Chapter 3

Customer Support

3.1 How To Contact Customer Support

Worldwide customer support information is available under **Contact >> Support Worldwide** at www.inficon.com:

- ◆ Sales and Customer Service
- ◆ Technical Support
- ◆ Repair Service

When contacting INFICON regarding a problem with EZ IQ software, please have the following information readily available:

- ◆ the EZ IQ software version number
- ◆ the type of computer and its specifications
- ◆ the Microsoft Windows type and version number
- ◆ a description of the problem
- ◆ an explanation of any corrective action already attempted
- ◆ the exact wording of any error messages received



www.inficon.com reachus@inficon.com

Due to our continuing program of product improvements, specifications are subject to change without notice.
All trademarks are the property of their respective owners.

PN 074-633-P1B

©2017 INFICON