



Micro GC Fusion[®]

OpenLAB CDS EZChrom Edition

Driver Installation Guide

PN 074-658-P1B



Trademarks

The trademarks of the products mentioned in this manual are held by the companies that produce them.

Micro GC Fusion® is a registered trademark of INFICON GmbH.

Windows® and Microsoft® are registered trademarks of Microsoft Corporation.

All other brand and product names are trademarks or registered trademarks of their respective companies.

Disclaimer

The information contained in this manual is believed to be accurate and reliable. However, INFICON assumes no responsibility for its use and shall not be liable for any special, incidental, or consequential damages related to the use of this product.

Due to our continuing program of product improvements, specifications are subject to change without notice.

Copyright

©2017 All rights reserved.

Reproduction or adaptation of any part of this document without permission is unlawful.

Table Of Contents

Cover Page 1

Trademarks 3

Disclaimer 3

Copyright 3

Chapter 1

Micro GC Fusion Driver Installation and Configuration

1.1	Introduction	1-1
1.2	Requirements	1-1
1.3	Installing Micro GC Fusion Driver for OpenLAB EZChrom.	1-1
1.4	Micro GC Fusion Driver License Activation	1-4
1.5	Configuring OpenLAB EZChrom for Micro GC Fusion	1-7

Chapter 2

Customer Support

2.1	How To Contact Customer Support	2-1
-----	-------------------------------------------	-----

Chapter 1

Micro GC Fusion Driver Installation and Configuration

1.1 Introduction

Micro GC Fusion is compatible with Agilent OpenLAB CDS EZChrom Edition software (OpenLAB EZChrom).

To connect Micro GC Fusion to OpenLAB EZChrom software, the Micro GC Fusion driver for OpenLAB EZChrom must be installed on the OpenLAB EZChrom computer and a license for the Micro GC Fusion Driver in OpenLAB or EZ IQ (PN 952-389-G1) must be obtained from INFICON and installed on the Micro GC Fusion.

1.2 Requirements

- ◆ A computer installed with OpenLAB EZChrom software
- ◆ OpenLAB EZChrom software with at least one available instrument control license installed (i.e., not linked to any instrument)
- ◆ Micro GC Fusion software upgraded to version 1.3 or higher
- ◆ Micro GC Fusion Driver for OpenLAB EZChrom
- ◆ Micro GC Fusion License for OpenLAB EZChrom (PN 952-389-G1)

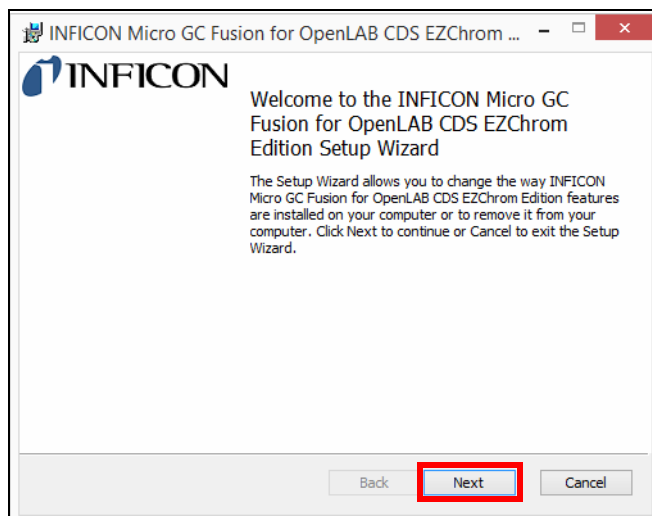
1.3 Installing Micro GC Fusion Driver for OpenLAB EZChrom

The OpenLAB EZChrom driver is available for download from <http://www.inficon.com/tabid/244/en-US/default.aspx>.

- 1** Download the Micro GC Fusion driver for OpenLAB EZChrom in the **Software Downloads** tab (<http://www.inficon.com/tabid/244/en-US/default.aspx>).
 - 1a** Click **Micro GC Fusion Driver for OpenLAB EZChrom**.
 - 1b** Enter user information and then click **Start Download**.
 - 1c** The file **MicroGCFusion-OpenLABEZChrom-Driver.Setup** will download.
- 2** Double-click **MicroGCFusion-OpenLABEZChrom-Driver.Setup** to start the installation process.

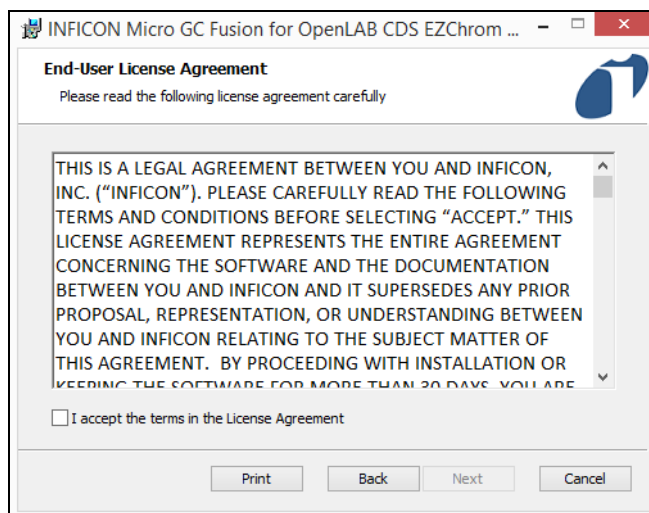
- 3 The **INFICON Micro GC Fusion for OpenLAB CDS EZChrom** window will display. Click **Next**. (See [Figure 1-1](#).)

Figure 1-1 OpenLAB EZChrom setup wizard



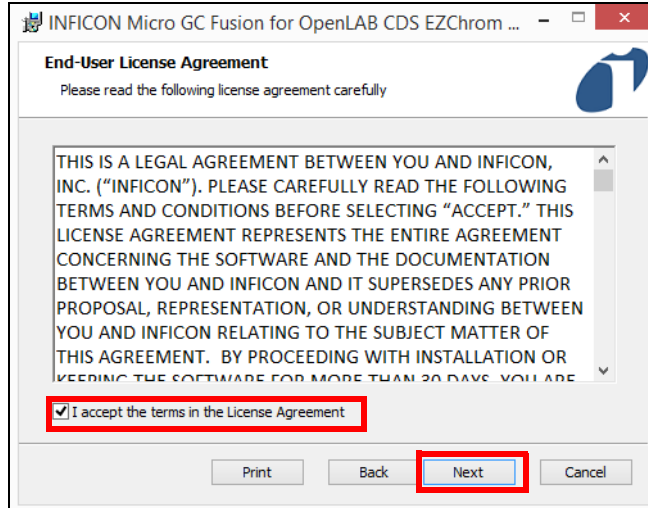
- 4 The **End-User License Agreement** window will display. (See [Figure 1-2](#).)

Figure 1-2 End-User License Agreement



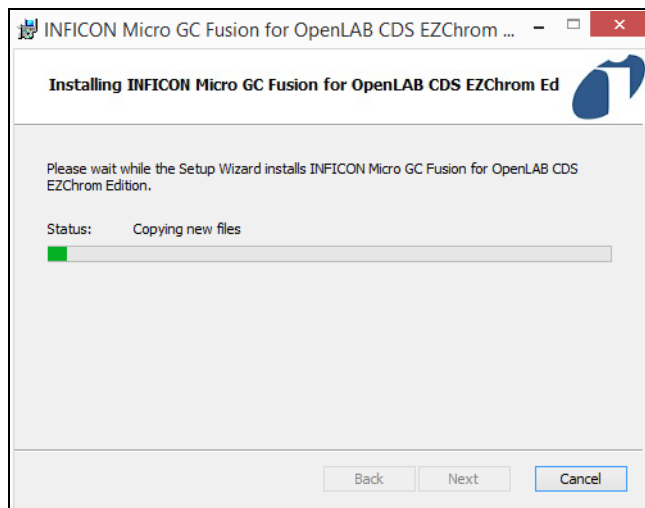
- 5 If the terms of the **End-User License Agreement** are acceptable, select **I accept the terms in the License Agreement**.
- 6 Click **Next**. (See [Figure 1-3](#).)

Figure 1-3 Accept the terms in the End-User License Agreement



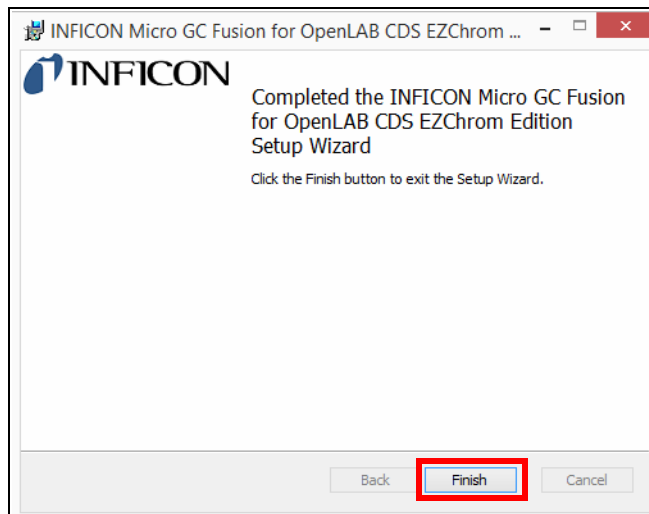
- 7 Installation will begin. (See [Figure 1-4](#).)

Figure 1-4 Driver installation



- 8 Once the installation is complete, click **Finish** to exit the setup wizard. (See Figure 1-5.)

Figure 1-5 Click Finish to exit the setup wizard



1.4 Micro GC Fusion Driver License Activation

Perform the following steps to activate Micro GC Fusion access from OpenLAB EZChrom.

- 1 Ensure the following materials are readily available:
 - ♦ The **License Certificate ID** from the **License Certificate** for EZ IQ or OpenLAB Access (PN 952-389-G1)
 - ♦ The serial number of the Micro GC Fusion that will connect to OpenLAB EZChrom

NOTE: The serial number can be found on the product label on the back of the instrument.

- 2 On a computer with access to the internet, open a web browser. Type **http://fusionlicense.inficon.com** in the address bar and press enter. Enter the **License Certificate ID** and **Instrument Serial Number**. (See [Figure 1-6](#).)

NOTE: Web browsers including the latest version of Google Chrome, FireFox and Internet Explorer are supported. Refer to 074-594-P1 Micro GC Fusion Operating Manual for support on older web browser versions.

Figure 1-6 License Activation and Download

INFICON Micro GC Fusion License Manager

License Activation and Download
for EZ IQ, OpenLAB CDS, or Modbus

License Certificate ID:

Instrument Serial Number:

Download License

Click the appropriate link for installation instructions:

- [EZ IQ and Micro GC Fusion Driver Installation Guide](#)
- [OpenLab CDS EZChrom Edition Driver Installation Guide](#)
- [Modbus over Ethernet Activation Guide](#)

1.1.0

- 3 Click **Download License** to download the **openlab-fusion.license** file onto the computer. (Refer to [Figure 1-6](#).)

NOTE: If a different computer was used to download the license file, transfer the **openlab-fusion.license** file to the computer connected to Micro GC Fusion.



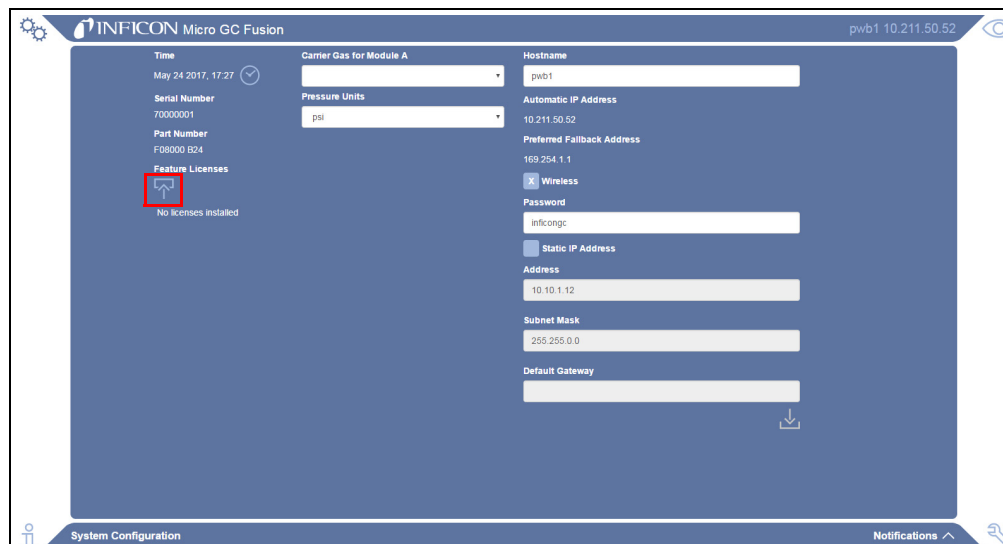
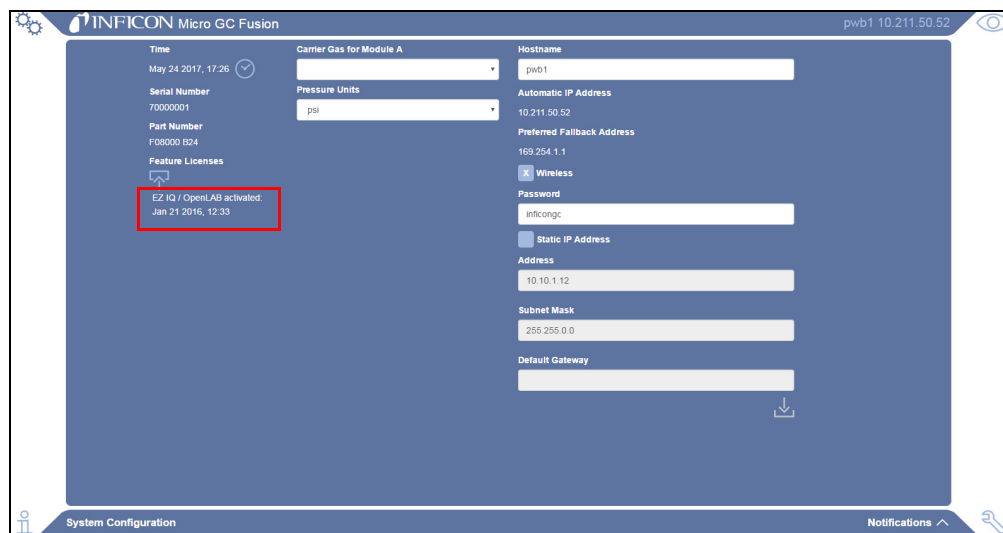
- 4 Complete the license activation by uploading the Micro GC Fusion license file into the Micro GC Fusion via the web-based user interface on the computer.
 - 4a On the computer that is connected to Micro GC Fusion, open a web browser. Type the instrument hostname or IP address of the connected Micro GC Fusion in the address bar and press enter.
 - 4b Click the  icon. Click the **System Administration** button. Click the **System Configuration** button.
 - 4c Click the  icon. (See Figure 1-7.)

Figure 1-7 Upload Micro GC Fusion license file



- 4d Navigate to the folder that contains the **openlab-fusion.license**. Click **Open** to upload the file.
- 5 The Micro GC Fusion is now licensed for OpenLAB EZChrom access. (See Figure 1-8.)

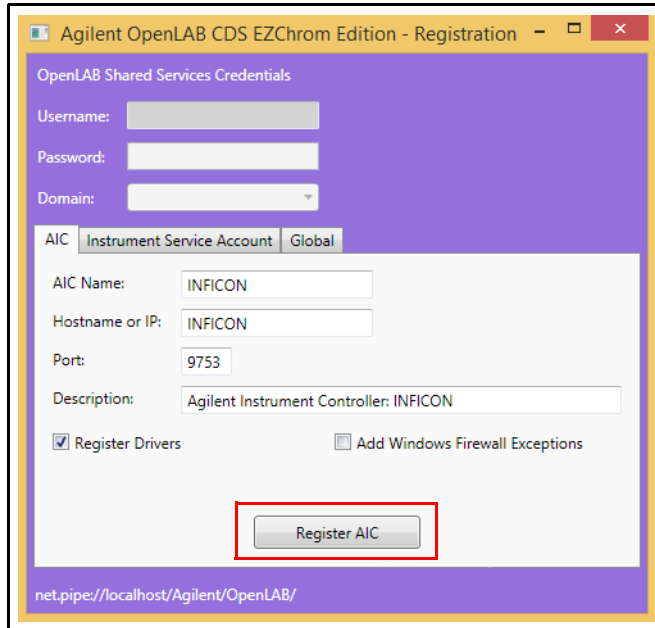
Figure 1-8 Upload license file is complete



1.5 Configuring OpenLAB EZChrom for Micro GC Fusion

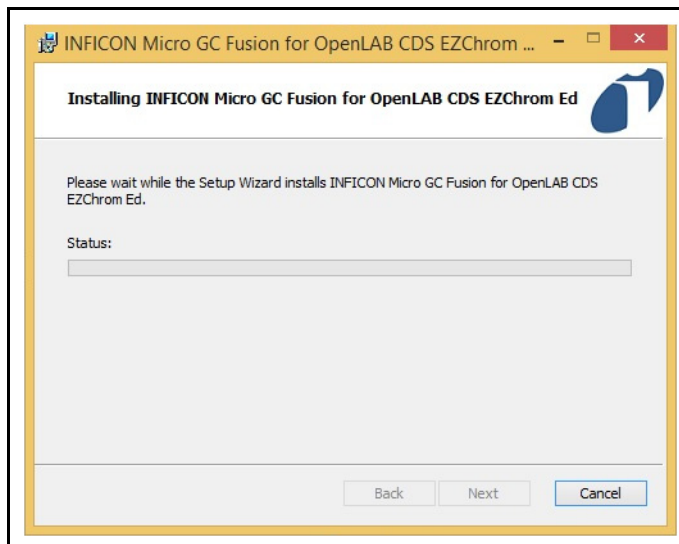
- 1 Press the start button and search and open **OpenLAB Register AIC**.
- 2 Click **Register AIC**. (See [Figure 1-9](#).)

Figure 1-9 OpenLAB Register AIC window



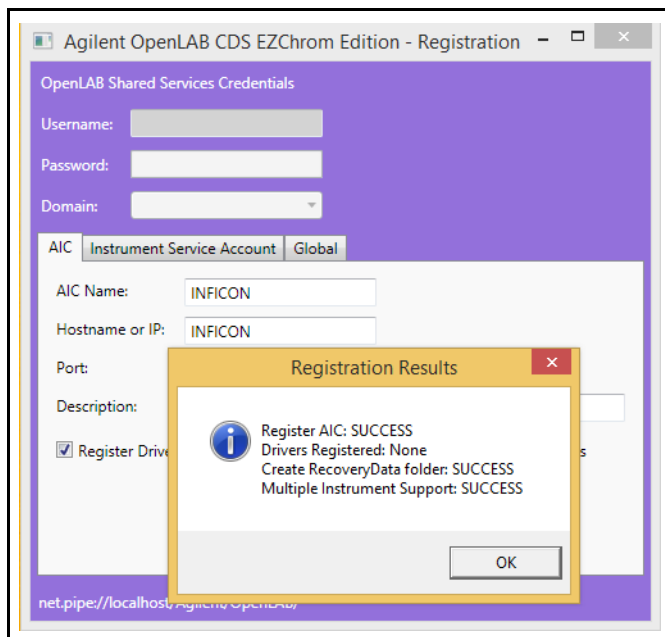
- 3 Install the Micro GC Fusion driver on OpenLAB. (See [Figure 1-10](#).)

Figure 1-10 Installing INFICON Micro GC Fusion for OpenLAB



4 Verify registration results were successful. (See [Figure 1-11.](#))

Figure 1-11 Registration results



Before configuring OpenLAB EZChrom for Micro GC Fusion, ensure:

- ◆ OpenLAB EZChrom software and Fusion Driver license were successfully installed
- ◆ Micro GC Fusion driver for OpenLAB EZChrom was successfully installed
- ◆ Micro GC Fusion is powered on
- ◆ The computer loaded with OpenLAB EZChrom and Micro GC Fusion are physically connected via an Ethernet cable, either through direct connection or through a LAN network

To configure Micro GC Fusion driver for OpenLAB EZChrom:

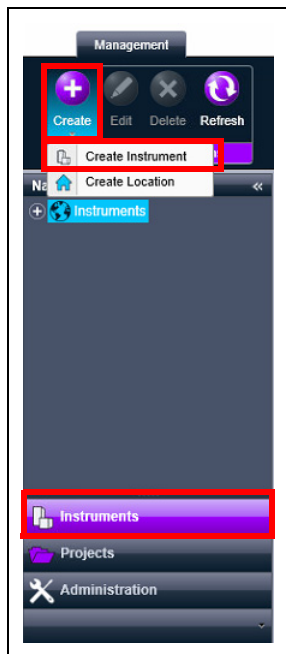
- 1 Click the **OpenLAB Control Panel** icon. (See [Figure 1-12.](#)) Alternately, click **Start >> Agilent Technologies >> OpenLAB Control Panel.exe**.

Figure 1-12 OpenLAB Control Panel shortcut



- 2 On the **Instrument** tab, click  and click **Create Instrument**. (See Figure 1-13.)

Figure 1-13 Create Instrument icon



- 3 In the **Name** box, type the instrument name. (See Figure 1-14.)
- 4 In the **Description** box, type a description of the instrument.
- 5 In the **Contact** box, type the name of the person responsible for the instrument.
- 6 In the **Default** project box, type a default project name.

NOTE: Alternately, select **always use default project with this instrument**.


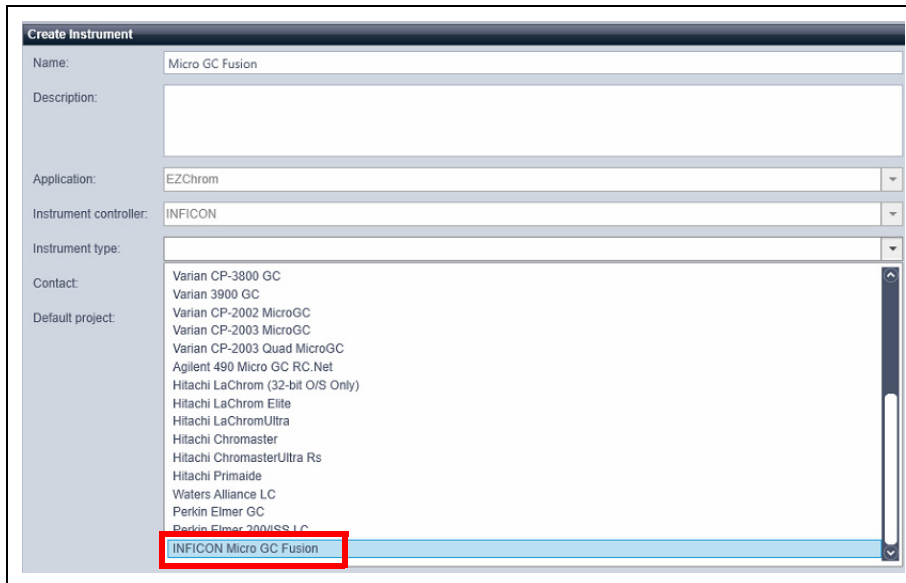
NOTE: Projects can be created by clicking the **Projects** tab, clicking  and then clicking **Create Project**.

Figure 1-14 Add a name, description, and contact

The screenshot shows a 'Create Instrument' dialog box. The 'Name' field contains 'Micro GC Fusion' and is highlighted with a red box. The 'Description' field is empty and highlighted with a red box. The 'Application' dropdown is set to 'EZChrom', 'Instrument controller' is 'INFICON', and 'Instrument type' is empty. The 'Contact' field contains 'Lab Technician' and is highlighted with a red box. The 'Default project' field is empty and highlighted with a red box. There is a checkbox labeled 'always use default project with this instrument' which is unchecked. The 'OK' button is highlighted with a red box.

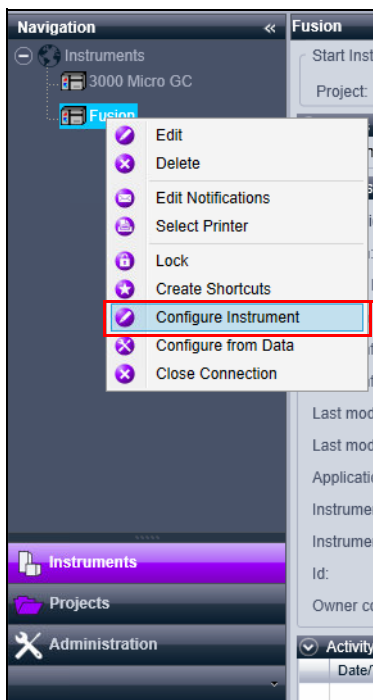
- 7 In the **Instrument type** list, access the shortcut menu and scroll down to select **INFICON Micro GC Fusion**. (See Figure 1-15.)

Figure 1-15 Select an instrument type



- 8 Click **OK**. (Refer to Figure 1-14.)
- 9 Right-click on the Micro GC Fusion instrument icon and click **Configure Instrument**. (See Figure 1-16.)

Figure 1-16 Configure instrument




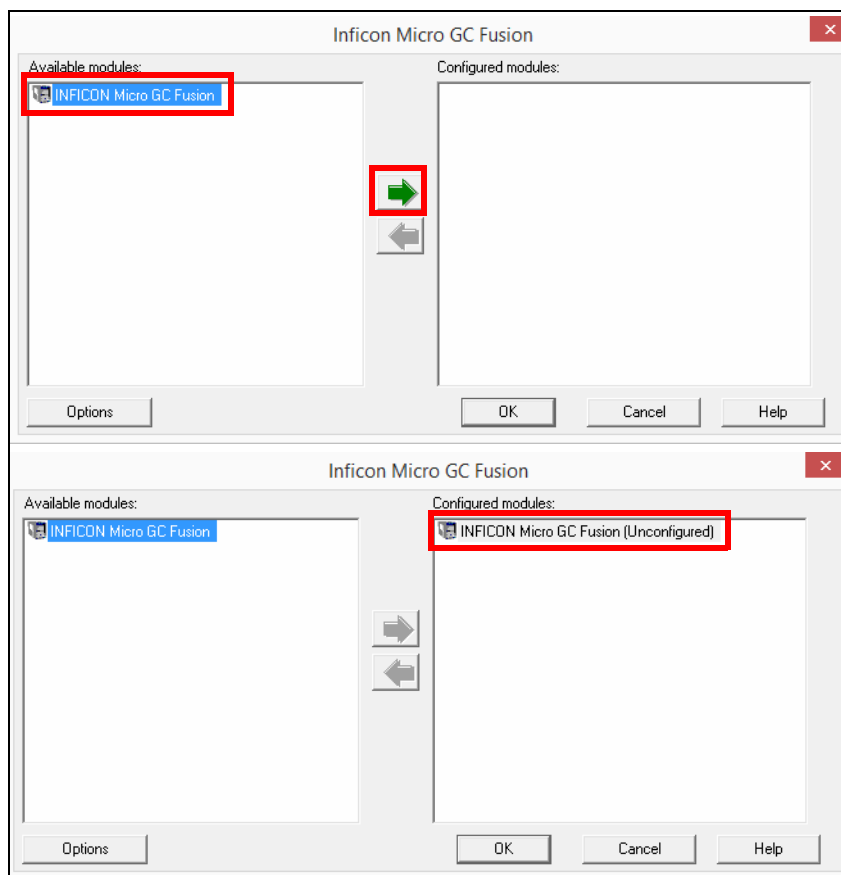
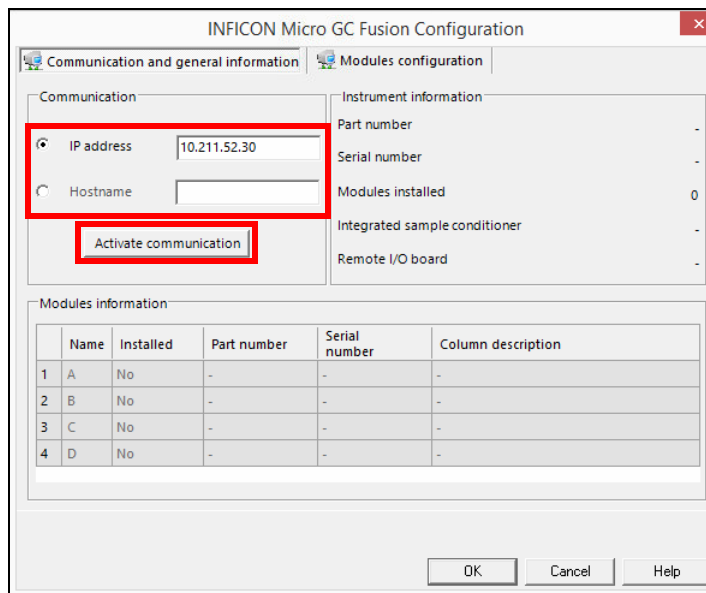
- 10 The **INFICON Micro GC Fusion** configuration window will display.
- 11 Click the **INFICON Micro GC Fusion** icon.
- 12 Click  to move the **INFICON Micro GC Fusion** icon from **Available modules** to **Configured modules**. (See [Figure 1-17](#).)

Figure 1-17 INFICON Micro GC Fusion driver icon, before and after



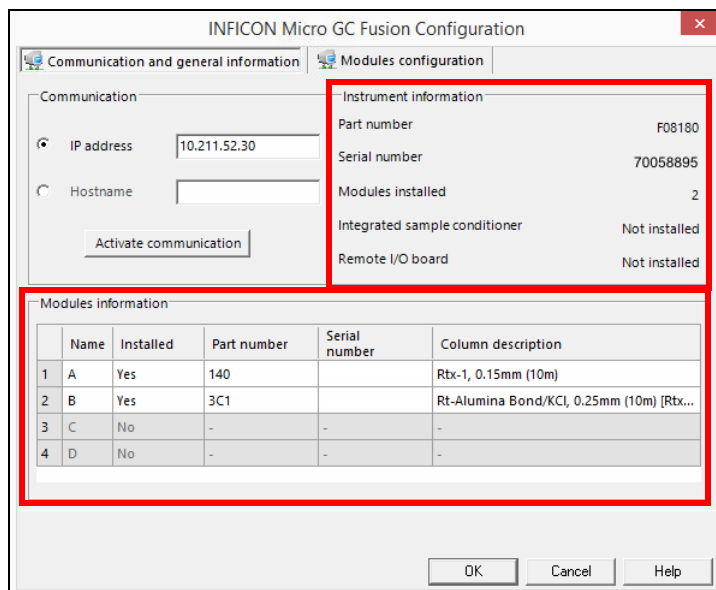
- 13 Double-click the **INFICON Micro GC Fusion (Unconfigured)** icon in the **Configured modules** pane to open the **INFICON Micro GC Configuration** window. (See [Figure 1-18](#).)
- 14 Type either the **IP address** or **Hostname** of Micro GC Fusion.
- 15 Click **Activate Communication**.

Figure 1-18 Type Micro GC Fusion IP address or Hostname



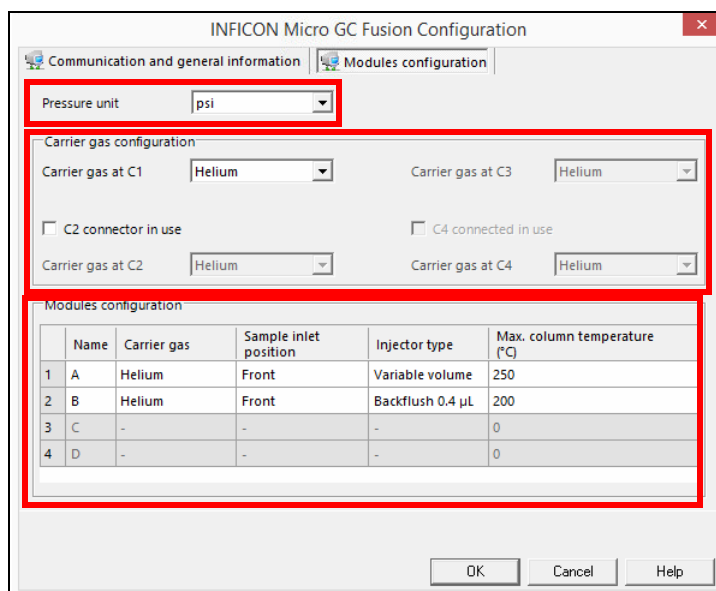
- 16 Once OpenLAB EZChrom has successfully communicated with Micro GC Fusion, the **Modules information** field will be populated with Micro GC Fusion configuration information. Additional information, such as instrument **Part number** and **Serial number** are available on the right-hand side of the window. (See Figure 1-19.)

Figure 1-19 Micro GC Fusion configuration



- 17 Select the **Modules configuration** tab to view the **Pressure unit**, **Carrier gas configuration** and additional module information. (See Figure 1-20.)

Figure 1-20 Modules configuration




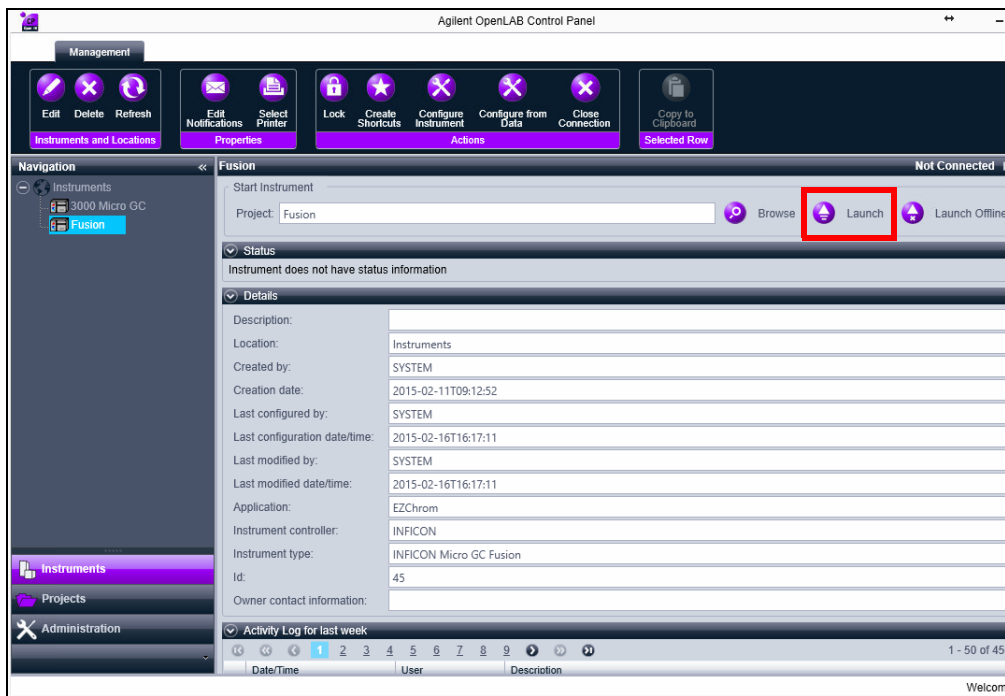
- 18 Click **OK** to exit the **INFICON Micro GC Configuration** window. (Refer to Figure 1-20.)
- 19 Click **OK** to exit the **INFICON Micro GC Fusion** window.
- 20 Click  to launch EZChrom. (See Figure 1-21.)

Figure 1-21 Launch EZ Chrom



Chapter 2

Customer Support

2.1 How To Contact Customer Support

Worldwide customer support information is available under **Contact >> Support Worldwide** at www.inficon.com:

- ◆ Sales and Customer Service
- ◆ Technical Support
- ◆ Repair Service

When contacting INFICON regarding a problem with the Micro GC Fusion driver for OpenLAB EZChrom software, please have the following information readily available:

- ◆ the OpenLAB EZChrom software version number
- ◆ the type of computer and its specifications
- ◆ the Microsoft Windows type and version number
- ◆ a description of the problem
- ◆ an explanation of any corrective action already attempted
- ◆ the exact wording of any error messages received

