

Claw Clamp with Hex. Head Screw

INFICON ISO-KF fittings are manufactured according to ISO 2861/1, DIN 28403 and Pneurop 6606. Our quality fittings are the standard components for all vacuum and high vacuum applications. The high quality INFICON components are designed and tested for leak rates less than 1×10^{-9} mbar l/s.



BENEFITS

- Competitively priced
- Design and measures follow strictly international respected standards
- World wide logistics
- 2011/65/EU RoHS compliant

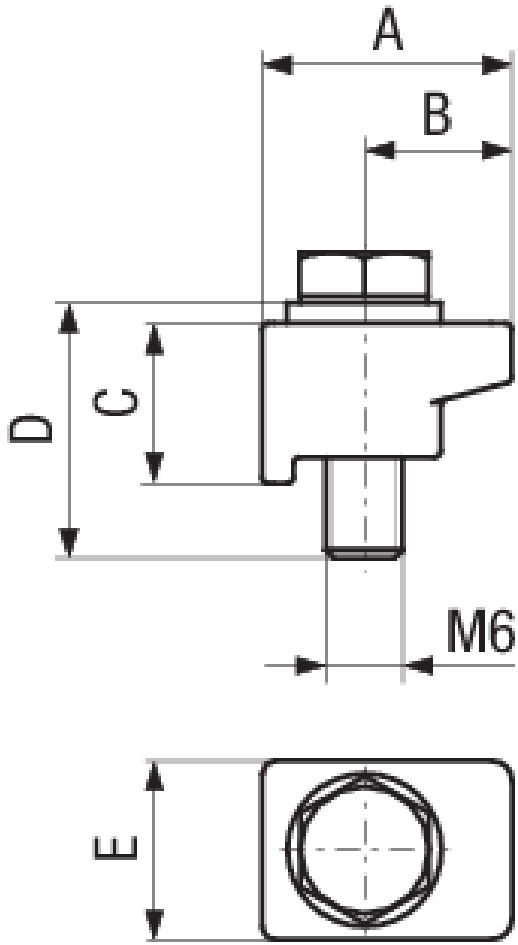
ORDER INFORMATION

Type	DN 10 - 50 ISO-KF
Claw clamp DN 10-50 ISO-KF, 4 pcs.	211-015

SPECIFICATIONS

Type	DN 10 - 50 ISO-KF
Dimension A	19.5
Dimension B	11.5
Dimension C	12.5
Dimension D	20
Dimension E	14
Set of	4
Claw:	Aluminum: 6081
Screw & washer:	Stainless Steel

DIMENSIONS



www.inficon.com reachus@inficon.com

Due to our continuing program of product improvements, specifications are subject to change without notice.
RateWatcher is a trademark of INFICON. All other trademarks are the property of their respective owners.

(2018-10) © 2018 INFICON