

# Bellows

---

INFICON ISO-KF fittings are manufactured according to ISO 2861/1, DIN 28403 and Pneurop 6606. Our quality fittings are the standard components for all vacuum and high vacuum applications. The high quality INFICON components are designed and tested for leak rates less than  $1 \times 10^{-9}$  mbar l/s.



## BENEFITS

---

- Competitively priced
- World wide logistics
- Design and measures follow strictly international respected standards
- Surface finish, welds, material specifications and cleanliness meet or exceed high vacuum specifications
- 2011/65/EU RoHS compliant

## ORDER INFORMATION

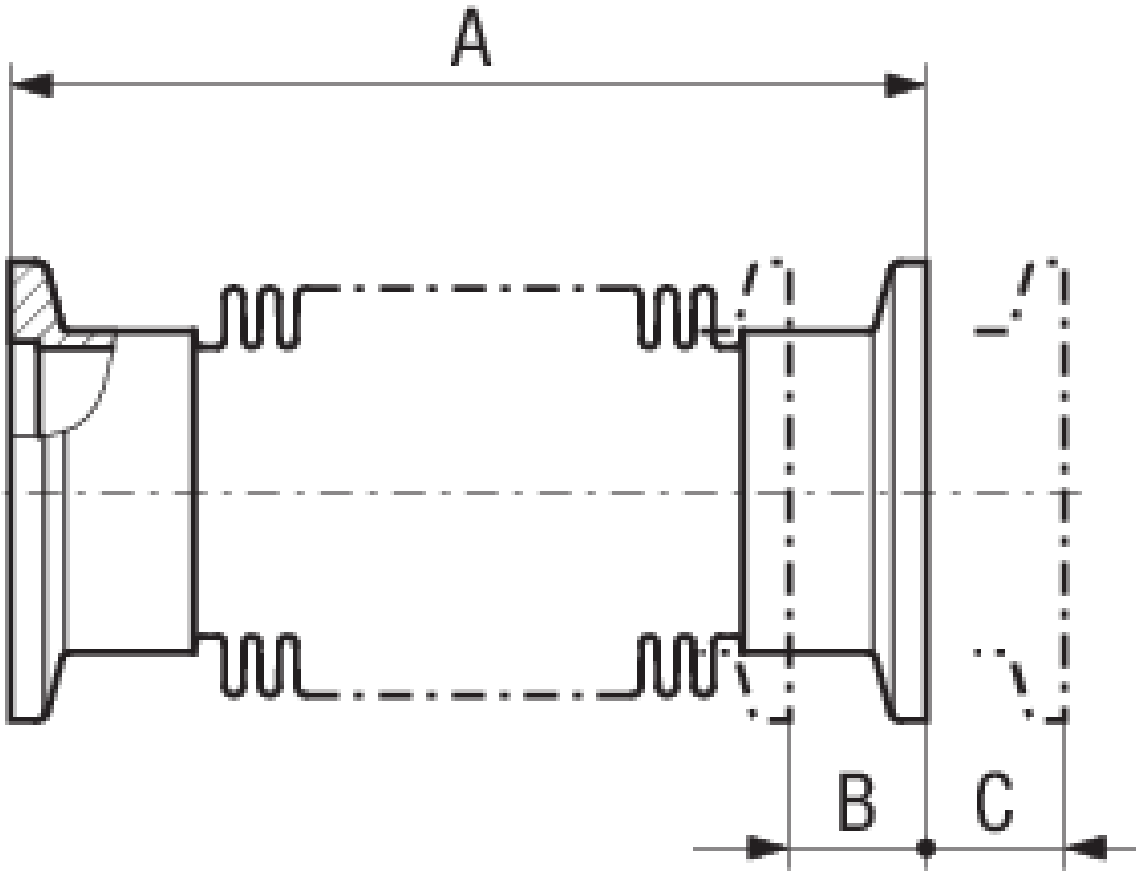
---

Type	DN 10 ISO-KF	DN 16 ISO-KF	DN 25 ISO-KF	DN 40 ISO-KF	DN 50 ISO-KF
Bellows, inox, DN 10 ISO-KF	211-326				
Bellows, inox, DN 16 ISO-KF		211-327			
Bellows, inox, DN 25 ISO-KF			211-328		
Bellows, inox, DN 40 ISO-KF				211-329	
Bellows, inox, DN 50 ISO-KF					211-330

## SPECIFICATIONS

Type	DN 10 ISO-KF	DN 16 ISO-KF	DN 25 ISO-KF	DN 40 ISO-KF	DN 50 ISO-KF
Dimension A	70	70	80	100	100
Dimension B	3.5	6.4	8	11	10
Dimension C	3	4.1	5	7	6
Dimension D	23°	21°	17°	15°	15°
Dimension E	5	4	3.5	7	8
Internal pressure:	Max. 4 bar	Max. 4 bar	Max. 4 bar	Max. 4 bar	Max. 4 bar
A=	unstressed length	unstressed length	unstressed length	unstressed length	unstressed length
D=	max. deviation from axis	max. deviation from axis	max. deviation from axis	max. deviation from axis	max. deviation from axis
E=	lateral displacement	lateral displacement	lateral displacement	lateral displacement	lateral displacement
Material:	Flanges: Stainless Steel 304 /1.4301	Flanges: Stainless Steel 304 /1.4301	Flanges: Stainless Steel 304 /1.4301	Flanges: Stainless Steel 304 /1.4301	Flanges: Stainless Steel 304 /1.4301
	Bellows: Stainless Steel 316Ti / 1.4571	Bellows: Stainless Steel 316Ti / 1.4571	Bellows: Stainless Steel 316Ti / 1.4571	Bellows: Stainless Steel 316Ti / 1.4571	Bellows: Stainless Steel 316Ti / 1.4571

DIMENSIONS



[www.inficon.com](http://www.inficon.com)    [reachus@inficon.com](mailto:reachus@inficon.com)

Due to our continuing program of product improvements, specifications are subject to change without notice.  
RateWatcher is a trademark of INFICON. All other trademarks are the property of their respective owners.

V1                      (2018-08)                      © 2018 INFICON