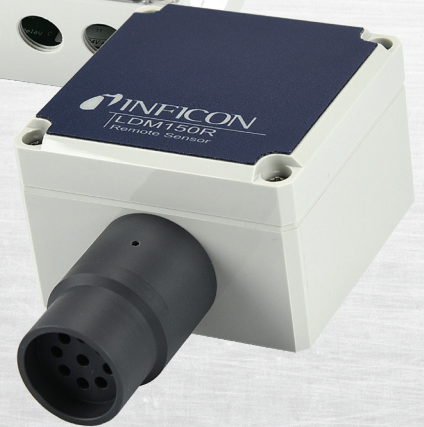


# LDM150 and LDM150R

## REFRIGERANT MONITORS

### Simple. Safe. Monitors.

LDM150 and LDM150R are simple, reliable and safe solutions for standalone constant monitoring of ANY refrigerant gas. These monitors are a true “plug and play” option! See how these monitors fit any application.



### ADVANTAGES

- Remote and integrated sensor options
- Low maintenance, single point calibration
- Easy field service
- Three adjustable alarm setpoints
- Low voltage operation
- Three relay outputs tie to any system or device
- Designed for any size application
- Factory calibrated
- Detects all CFCs, HFCs, HFOs, HCFCs, HCs, CFCs, CO<sub>2</sub>, and NH<sub>3</sub>

## LDM150 REFRIGERANT MONITORS

SPECIFICATIONS			
PART NUMBER	743-202-HFC 743-202-HFCHV	743-202-CO2 743-202-CO2HV	743-202-NH3 743-202-NH3HV
Compatible refrigerants	R22, R32, R134a, R404a, R407c, R410a, R422b, R448a, R449a, R452a, R452b, R507 (AZ50), R1234yf and more	CO <sub>2</sub>	Ammonia
Power input	230 V AC or 12-24 V (AC/DC), 50-60Hz		
Cable length	Not included (user provided)		
Certification	CE, IP54		
Alarm indication	No integrated siren, three alarm levels with relay outputs (5A)		
Sensor	Surface reaction	IR	Surface reaction

## LDM150R REFRIGERANT MONITORS

SPECIFICATIONS				
PART NUMBER	743-203-HFC 743-203-HFCHV	743-203-CO2 743-203-CO2HV	743-203-NH3 743-203-NH3HV	743-203-R290 743-203-R290HV
Compatible refrigerants	R22, R32, R134a, R404a, R407c, R410a, R422b, R448a, R449a, R452a, R452b, R507 (AZ50), R1234yf and more	CO <sub>2</sub>	Ammonia	R290, R600, R441a
Cable length	Not included (user provided)			5m (16.5 ft.)
Power source	230 V AC or 12-24 V (AC/DC), 50-60Hz			
Certification	CE, IP67			CE, IP56, ATEX
Alarm indication	Integrated siren, flashing light and three alarm levels with relay outputs (5A)			Three alarm levels with relay outputs (5A)
Sensor	Surface reaction	IR	Surface reaction	

## ACCESSORIES/REPLACEMENT PARTS

Red siren with alarm	743-707-G1
MCT150 calibration tool	743-600-G1
Replacement sensor module for MCT150 (ammonia)	743-705-G1
Replacement sensor module for MCT150 (HFC)	743-706-G1
Replacement sensor for LDM150R (CO <sub>2</sub> )	743-700-G1
Replacement sensor for LDM150 (CO <sub>2</sub> )	743-701-G1
Replacement sensor for LDM150/LDM150R (HFC)	743-704-G1
Replacement sensor for LDM150/LDM150R (ammonia)	743-703-G1
Replacement sensor for LDM150R (hydrocarbon) with cable (ATEX)	743-702-G1



[www.inficonservicetools.com](http://www.inficonservicetools.com)

[service.tools@inficon.com](mailto:service.tools@inficon.com)

Due to our continuing program of product improvements, specifications are subject to change without notice.

eic75a1-A ©2020 INFICON