

TECHNICAL NOTE

Using SQC-310 USB Communications with Windows® 7 and 8, 64-bit Operating Systems

INTRODUCTION

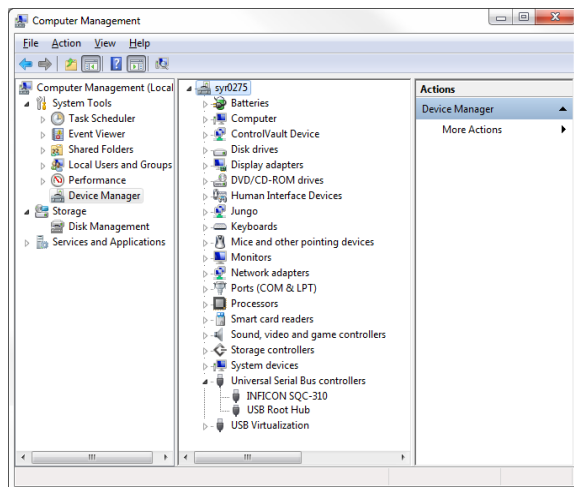
SQC-310 USB communication is compatible with Windows 7 and 8, 64-bit operating systems. However, due to Windows 7 and 8, 64-bit operating systems having the Driver Signature Enforcement inherent in operation, SQC-310 USB communication is not always recognized by the operating system when following the typical installation steps.

The original installation drivers supplied with SQC-310 are not signed. Windows 7 and 8, 64-bit operating systems do not recognize unsigned drivers and block the installation. This creates an inability to find SQC-310 USB communication connections using the supplied SQC-310 Comm software.

SQC-310 USB COMMUNICATION INSTALLATION WITH WINDOWS 7 AND 8, 64-BIT

When using a computer with a Windows 7 or 8, 64-bit operating system and SQC-310 USB communication, follow the instructions below. This procedure will allow the operating system to recognize and begin to read SQC-310 using USB communication.

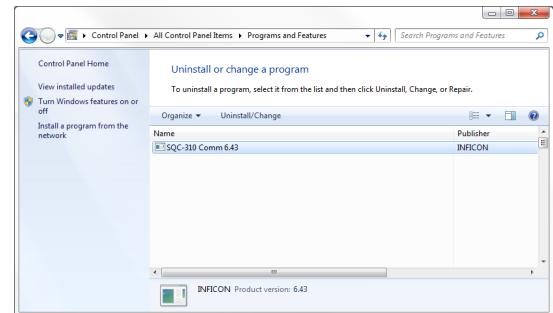
- 1 Open the Device Manager of the computer. Confirm that SQC-310 is not a device that is listed. If **INFICON SQC-310** is displayed, right-click and uninstall **INFICON SQC-310**.



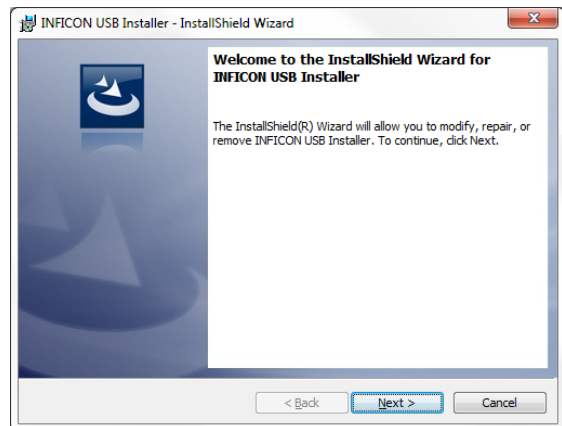
Be sure to select the checkbox on the dialog window to **Delete the driver software for this device**.



- 2 Uninstall the SQC-310 Comm 6.43 software from the control panel.



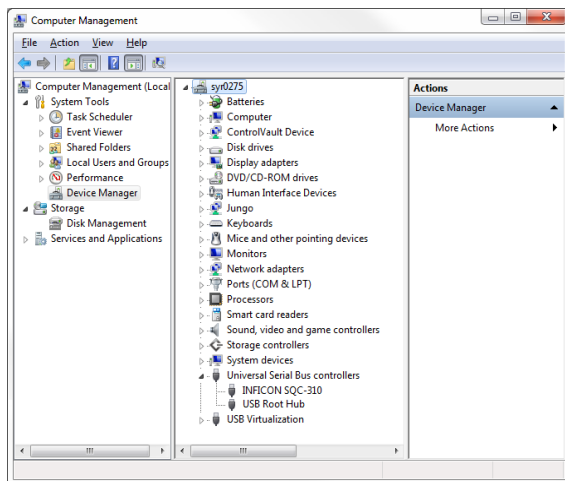
- 3 Download the [USB Installer v1.8.0](#) using the link, or the Downloads tab on the SQC-310 product page of the website, www.inficon.com.
- 4 Install the USB Installer v1.8.0.



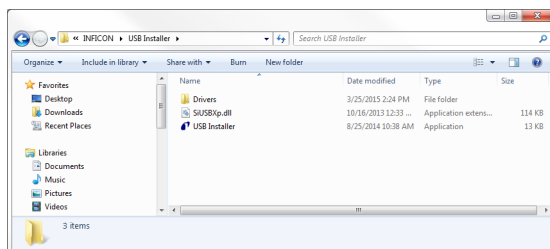
- 5 Install the SQC-310 Comm software.



- 6 Connect SQC-310 using USB communications.
7 Open the Device Manager of the computer. Confirm that **INFICON SQC-310** is displayed under USB devices.

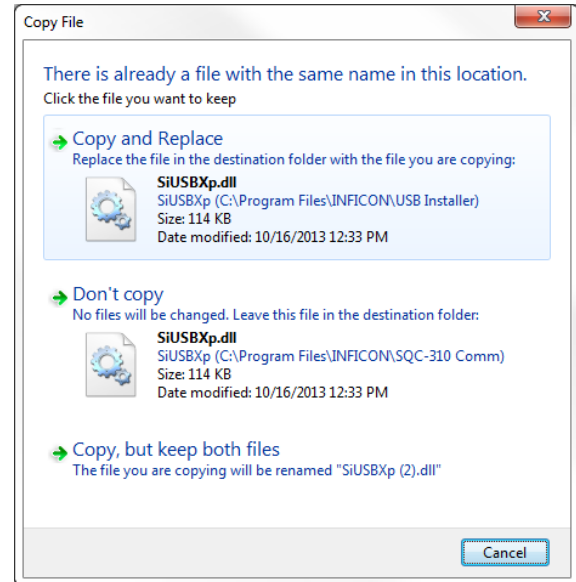


- 8 Open **C:\Program files(x86)\INFICON\USB** installer.

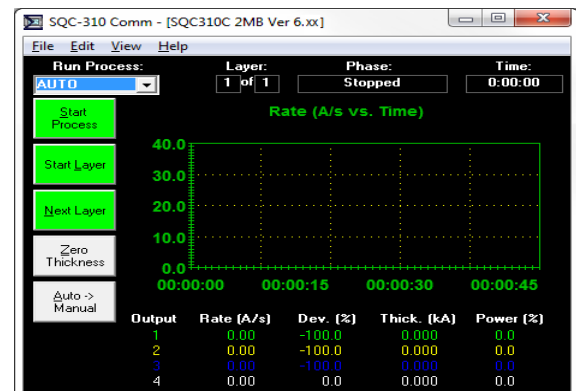


- 9 Copy the file **SiUSBp.dll**.

- 10 Paste this file into **C:\Program files(x86)\INFICON\SQC-310 Comm**. Replace the file by that same name in this folder.



- 11 Run the SQC-310 Comm software and confirm successful operation. On the SQC-310 Comm software main window, the firmware version of the SQC-310 [**SQC310C 2MB Ver 6.xx**] should be displayed in the title bar of the window.



www.inficon.com reachus@inficon.com

Due to our continuing program of product improvements, specifications are subject to change without notice. All trademarks are the property of their respective owners.