



Translation of the original operating instructions

Sniffer line

SL3000

Catalog No.

525-001, 525-002, 525-003, 525-004

From software version

--



INFICON GmbH

Bonner Strasse 498

50968 Cologne, Germany

Table of contents

1 About this manual	4
1.1 Target groups	4
1.2 Warnings	4
2 Safety	5
2.1 Intended use	5
2.2 Duties of the operator	6
2.3 Owner Requirements	6
3 Scope of delivery	7
4 Description	8
4.1 Function	8
4.2 Structure of the sniffer line	9
4.3 Technical data	11
5 Installation	12
6 Maintenance	13
6.1 Maintenance SL3000	13
6.2 Maintenance plan	15
7 Accessories and spare parts	16
8 Decommissioning	17
8.1 Disposing of the device	17
8.2 Send in Sniffer line SL3000 for maintenance, repair or disposal	17
9 CE Declaration of Conformity	19

1 About this manual

These operating instructions describe the setup and maintenance of the SL3000 sniffer line.

Product names may occur in the document, which are added for identification purposes only and belong to the respective owner of the rights.

1.1 Target groups

This instruction manual is intended for operators and technically qualified personnel with experience in leak detection technology and the integration of leak detectors in leak detection systems.

1.2 Warnings



DANGER

Imminent hazard resulting in death or serious injuries



WARNING

Hazardous situation resulting in potential death or serious injuries



CAUTION

Hazardous situation resulting in minor injuries



NOTICE

Hazardous situation resulting in damage to property or the environment

2 Safety

2.1 Intended use

A sniffer line type SL3000 can be used with the following leak detection systems:

- Protec P3000
- Ecotec E3000
- UL3000 Fab Plus
- UL3000 Fab ULTRA
- UL6000 Fab

Incorrect usage

- Use in radioactive areas
- Use of accessories or spare parts, which are not included in this instruction manual
- Use outside the technical specifications, see "Technical Specifications"
- Testing of wet or damp test objects
- Pumping off solids
- Suctioning of liquids into the device
- Operation without an exhaust line on the Gas Detection Unit
- Using the device in potentially explosive atmospheres

2.2 Duties of the operator

- Read, observe, and follow the information in this manual and in the work instructions provided by the owner. This concerns in particular the safety and warning instructions.
- Always observe the complete operating instructions for all work.
- If you have any questions about operation or maintenance that are not answered in this operating instructions, contact INFICON service.

2.3 Owner Requirements

The following notes are for companies or any person who is responsible for the safety and effective use of the product by the user, employees or third parties.

Safety-conscious operation

- Operate the device only if it is in perfect technical condition and has no damage.
- Only operate the device properly in accordance with this instruction manual, in a safety and risk conscious manner.
- Adhere to the following regulations and observe their compliance:
 - Intended use
 - Universally valid safety and accident prevention regulations
 - International, national and local standards and guidelines
 - Additional device-related provisions and regulations
- Only use original parts or parts approved by the manufacturer.
- Keep this instruction manual available on site.

Personnel qualifications

- Only instructed personnel should be permitted to work with and on the device. The instructed personnel must have received training on the device.
- Make sure that authorized personnel have read and understood the instruction manual and all other applicable documents.

3 Scope of delivery

Item	Quantity
Sniffer line SL3000 in ordered version and quantity. See also "Accessories and spare parts [▶ 16]".	
Operating manual	1

4 Description

4.1 Function

To find leaks, pass the tip of the sniffer line over places where helium may be leaking. Depending on the design of the sniffer line, you can detect different gases.

The sniffer lines are available in different lengths and with different sniffer tips, see “Accessories and spare parts [▶ 16]”.

The sniffer line consists of a multifunction cable, a sniffer handle and a sniffer tip.

There are special sniffer lines for robot applications, see “Accessories and spare parts [▶ 16]”.

4.2 Structure of the sniffer line

Structure

⚠ WARNING

Risk of eye damage

LEDs on the sniffer handle produce focused light that can damage the eyes.

- ▶ Do not look into the LEDs from a short distance or for longer periods of time.

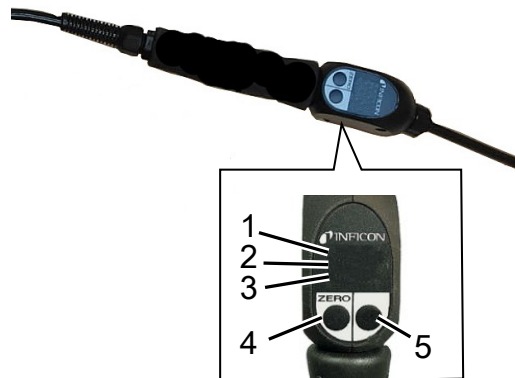
⚠ CAUTION

Danger of blockage due to liquids

Liquid may destroy the device.

- ▶ Do not draw in any liquids (e.g. water or adhesives).

The display of the sniffer handle displays part of the information of the main display.



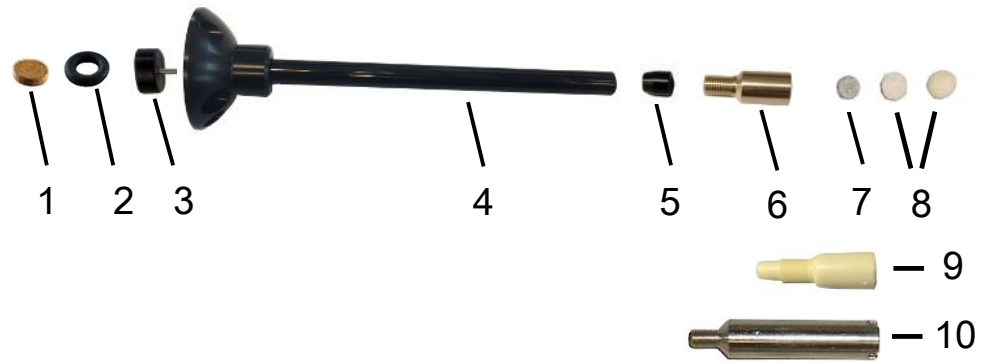
1	Leak rate as bar graph	4	"ZERO" push button
2	Leak rate, numerical	5	Push button (individual assignment)
3	Measured gas		

The leak rate is shown as a bar graph and displayed numerically as in the main display of the leak detector

There are two push buttons on the sniffer handle. Pressing the left button sets the background display to ZERO. For more information on the functions of these buttons, refer to the operating instructions of the leak detectors used.

The sniffer handle is equipped with LEDs for work in dimly lit places.

Sniffer tip SL3000



1	Sinter filter (bronze Poral filter)	6	Brass capillary filter
2	O ring	7	Metal filter
3	Stainless steel capillary with adapter	8	Cotton filter
4	Sniffer tip	9	Replacement plastic capillary filter incl. filter set
5	Cone seal	10	Water conservation tip

4.3 Technical data

Mechanical data	SL3000
Gas flow	
for Ecotec E3000	160 sccm
for Protec P3000	300 sccm
for UL3000 Fab, UL3000 Fab ULTRA, , UL6000 Fab	160 sccm
ZERO via button	Yes
Connection on the device	Via separate socket on the device
Display with measurement view	Yes
Acknowledge faults via buttons on the sniffer probe	Yes
End standby via a button on the sniffer probe	Yes
Acknowledge calibration via a button on the sniffer probe	Yes
Electrical data	
Operating voltage	5V
Mains frequency	DC voltage
Power consumption	20 VA
Ambient conditions	
Max. height above sea level	2000 m
Maximum relative humidity	80% to 31 °C and 50% above 31 °C
Max. storage temperature	-20 °C to +60 °C
Permissible ambient temperature (during operation)	5 °C to 40 °C

5 Installation

For connection to the respective leak detector, the sniffer line is connected to the connection socket.

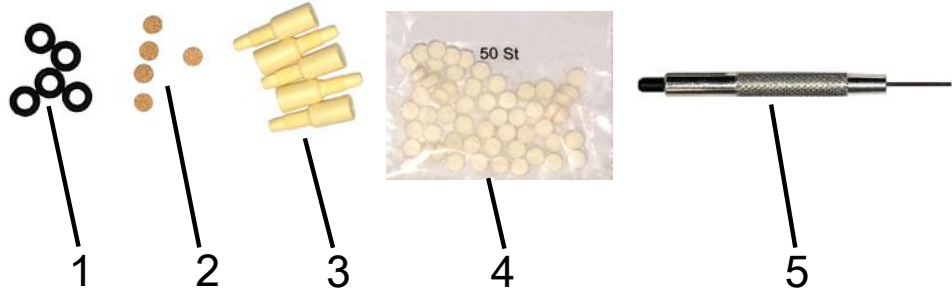
Via this connector both the electrical connection and the connection of the vacuum system is made.

- ✓ The leak detector has an interface for an SL3000 sniffer line.
- ✓ The SL3000 sniffer line is available.
- ▶ Connect the sniffer line to the leak detector.
- ⇒ The sniffer line is ready for operation.

6 Maintenance

6.1 Maintenance SL3000

SL200 Filter kit no.
200004312



1	O-rings (5x)	4	Cotton filter (50x)
2	Sinter filter (bronze poral filter, 5x)	5	Needle tip tool
3	Replacement capillary filters made of plastic (5x)		

Change cotton filters
in the sniffer tip



Fig. 1: Sniffer tip SL200 with cotton filters removed

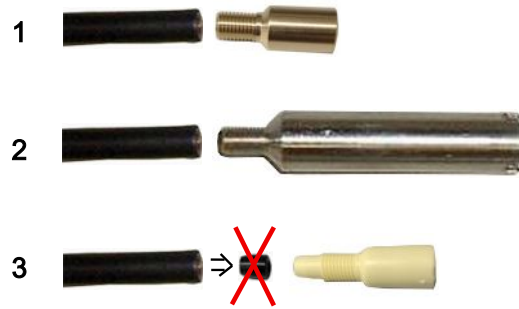
- ✓ The cotton filters in the sniffer tip are dirty (brass or plastic capillary filters).
- ✓ The sniffer tip is not screwed on.

1 Carefully remove both cotton beads from the front using the pointed end of the needle tip tool.

Note: The metal filter behind it is maintenance-free and must not be damaged or moved out of position by the needle point tool. This would impair the effectiveness of the metal filter. For the position of the metal filter, see also "SL3000".

2 Using the blunt end of the needle tip tool, stuff two clean cotton filters into the capillary filter.

Capillary filter change, different possibilities

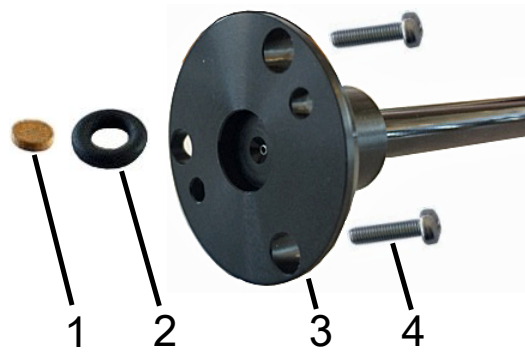


1	Sniffer tip and replacement capillary filter made of brass, cotton filter already included
2	Sniffer tip and protection from water tip, cotton filter not required
3	Sniffer tip and replacement capillary filter made of plastic, cotton filter already included. The cone seal must be removed from the sniffer tip. Use the needle tip tool for this purpose if required.

Procedure

- ✓ The capillary filter is to be replaced by a brass capillary filter. Or:
 - ✓ The capillary filter is to be replaced by a plastic capillary filter. Or:
 - ✓ The capillary filter should be replaced by a water protection tip.
 - 1 Unscrew the capillary filter.
 - 2 Take the new capillary filter made of brass or plastic or the water protection tip as desired. The necessary filters are already built in.
 - 3 If you want to replace a capillary filter made of brass with a capillary filter made of plastic, also remove the cone seal. See also "SL3000".
 - 4 Screw the new capillary filter or the water protection tip hand-tight onto the sniffer tip.
- ⇒ The new sniffer tip can be used again.

Check / replace sinter filter and O-ring



1	Sinter filter (bronze Poral filter)	3	Connection adapter
2	O ring	4	Mounting screws (2x)

Procedure

- ✓ The leak detector is switched off and the sniffer line is removed.
- ✓ The sniffer tube is removed from the sniffer handle.
 - 1 Loosen the two fastening screws.
 - 2 Remove the O-ring and the sinter filter.
 - 3 Visually inspect the sinter filter and the O-ring for dirt and damage.
 - ⇒ If damage or dirt is found, always replace the O-ring and sinter filter in pairs.
 - 4 Screw the sniffer tube back on to the sniffer handle.
- ⇒ The sniffer line is ready to be used again.

6.2 Maintenance plan

Assembly	Maintenance Work SL3000	Operating hours/years (intervals are repeated)				Service level	Spare part number
		500	2000	10000	As required		
		1/4	1/2	1			
Check the sintered filter (bronze poral filter) of the sniffer tip and replace, if necessary	Sinter filter (bronze poral filter) for sniffer tip				1	I	20003 500
Replace the filter inserts of the capillary filters and the water protection tip.	Felt for capillary filter				1	I	200001116

Explanation of the maintenance plan:

- I Service level I Customer
- 1 Depending on environment and use

7 Accessories and spare parts

Sniffer line SL3000	Catalog number
SL3000-3, sniffer line 3 m length	525-001
SL3000-5, sniffer line 5 m length	525-002
Sniffer line SL3000-5, 5 m length, with FTS385XL tip	521-034
SL3000-10, sniffer line 10 m length	525-003
SL3000-15, sniffer line 15 m length	525-004
Sniffer tips for SL3000	
Sniffer tip ST312, 120 mm long, rigid	12213
Sniffer tip FT312, 120 mm long, flexible	12214
Sniffer tip ST200, 200 mm long, rigid	12218
Sniffer tip FT250, 250 mm long, flexible	12266
Sniffer tip ST385, 385 mm long, rigid	12215
Sniffer tip FT385, 385 mm long, flexible	12216
Sniffer tip FT600, 600 mm long, flexible	12209
Sniffer tip, rigid, 500 mm. 45° angled (ST 500)	12272
Water conservation tip	12246
Spare parts kit (complete)	200004312
!•Tips for setting up on a SL3000 sniffer tip	
!•Tip SENS package, 20 base bodies with brushes	531-040
!•Tip SENS package, 5 base bodies with brushes	531-041
!•Tip RUGGED package, 24 base bodies with 120 replacement rubber lips	531-042
Holder for sniffer line SL3000	551-203
Sniffer tip compl. 120 mm	20003685
Spare part sniffer tip compl. 400 mm	20003690

8 Decommissioning

8.1 Disposing of the device

The device can either be disposed of by the operator or be sent to the manufacturer. The device consists of materials that can be recycled. This option should be exercised to prevent waste and also to protect the environment.

During disposal, observe the environmental and safety regulations of your country.



Device cannot be scrapped with the normal domestic waste.

8.2 Send in Sniffer line SL3000 for maintenance, repair or disposal



WARNING

Danger due to harmful substances

Contaminated devices could endanger health. The contamination declaration serves to protect all persons who come into contact with the device. Devices sent in without a return number and completed contamination declaration will be returned to the sender by the manufacturer.

► Fill in the declaration of contamination completely.

- 1** Contact the manufacturer and send in a completed declaration of contamination before return shipment.
 - ⇒ You will then receive a return number and the shipping address.
- 2** Use the original packaging when returning.
- 3** Before shipping the instrument, attach a copy of the completed contamination declaration to the outside of the package.

For contamination declaration see below.

Declaration of Contamination

The service, repair, and/or disposal of vacuum equipment and components will only be carried out if a correctly completed declaration has been submitted. Non-completion will result in delay.
 This declaration may only be completed (in block letters) and signed by authorized and qualified staff.

1 Description of product

Type _____

Article Number _____

Serial Number _____

2 Reason for return

3 Operating fluid(s) used (Must be drained before shipping.)

4 Process related contamination of product:

toxic	no <input type="checkbox"/> 1)	yes <input type="checkbox"/>	
caustic	no <input type="checkbox"/> 1)	yes <input type="checkbox"/>	
biological hazard	no <input type="checkbox"/>	yes <input type="checkbox"/> 2)	
explosive	no <input type="checkbox"/>	yes <input type="checkbox"/> 2)	
radioactive	no <input type="checkbox"/>	yes <input type="checkbox"/> 2)	
other harmful substances	no <input type="checkbox"/> 1)	yes <input type="checkbox"/>	

2) Products thus contaminated will not be accepted without written evidence of decontamination!

The product is free of any substances which are damaging to health
 yes

1) or not containing any amount of hazardous residues that exceed the permissible exposure limits

5 Harmful substances, gases and/or by-products

Please list all substances, gases, and by-products which the product may have come into contact with:

Trade/product name	Chemical name (or symbol)	Precautions associated with substance	Action if human contact

6 Legally binding declaration:

I/we hereby declare that the information on this form is complete and accurate and that I/we will assume any further costs that may arise. The contaminated product will be dispatched in accordance with the applicable regulations.

Organization/company _____

Address _____ Post code, place _____

Phone _____ Fax _____

Email _____

Name _____

Date and legally binding signature _____ Company stamp _____

Copies:
 Original for addressee - 1 copy for accompanying documents - 1 copy for file of sender

9 CE Declaration of Conformity



EU Declaration of Conformity

We – INFICON GmbH - herewith declare that the products defined below meet the basic requirements regarding safety and health and relevant provisions of the relevant EU Directives by design, type and the versions which are brought into circulation by us. This declaration of conformity is issued under the sole responsibility of INFICON GmbH.

In case of any products changes made without our approval, this declaration will be void.

Designation of the product:

Sniffer line

Models:

SL3000

SL3000XL

The products meet the requirements of the following Directives:

- **Directive 2014/30/EU (Electromagnetic Compatibility)**
- **Directive 2011/65/EU (RoHS)**

Applied harmonized standards:

- **EN 61326-1:2013**
Class A according to EN 55011:2016+A1 :2017
- **EN IEC 63000:2018**
- **EN ISO 12100:2010**

Catalogue numbers:

521-011	525-001
521-012	525-002
521-013	525-003
521-014	525-004
521-015	525-005
521-034	521-035

Authorised person to compile the relevant technical files:

Heinz Rauch, INFICON GmbH, Bonner Strasse 498, D-50968 Cologne

Cologne, November 11th, 2021

H. Bruhns, Vice President LDT

Cologne, November 11th, 2021

pro

W. Schneider, Research and Development

INFICON GmbH
Bonner Strasse 498
D-50968 Cologne
Tel.: +49 (0)221 56788-0
Fax: +49 (0)221 56788-90
www.inficon.com
E-mail: leakdetection@inficon.com



www.inficon.com reachus@inficon.com

Due to our continuing program of product improvements, specifications are subject to change without notice.
The trademarks mentioned in this document are held by the companies that produce them.